

THE PHANTOM

Winter 2024



Chair Report: Libby Fletcher

IN THIS ISSUE:	PAGE NO.
From the Chair	1-3
LTSWG Terms of Reference	
RLC Sewerage Scheme Update	5-6
Incorporated Societies Act 2022	7
Tailored Builds	
BOPRC—Biosecurity Update	8-9
Community Centre Update	
STOP Freshwater Gold Clams	10
Merlin Electrical, AEDs, Bottles	11
Fish & Game Update	12
Telfer Marine	
Jenny Donne Bayley's	13
Tarawera Sailing	13-16
Hanson Heating	17
BOPRC Harbour Master	18
Boating Safety	19
Tarawera Pest Control	20
The Black Barn	21
Message from the Mayor	22
Recycling Updates	23-24
LTRA Committee/Useful Numbers	25

Welcome to the Winter Phantom. It was great to see so many families enjoying beautiful weather at Tarawera for the first week of the recent school holidays.

Submissions to the Long-Term Plans:

The LTRA committee were all very involved with the preparation of the Long-Term Plan submissions for both Rotorua Lakes Council and Bay of Plenty Regional Council. I want to take this opportunity to thank Ray Gatland for presenting the submissions to both Councils at their hearings, both presentations were well received. The submissions and presentations were aligned to the presentations from the Tarawera Sewerage Working Group, the common goal being a cap of 50 % contribution by the community, the lowest price per connection as possible and ideally a cap on total cost including GST per connection.

Peter Fahey and I attended the meeting where the Long-Term Plan was adopted. It was pleasing to hear that Tarawera was to receive a further \$1,200.00 subsidy for property owners. Naturally we would have preferred more, however we continue to work

(Continued from page 1)

towards further funding for the scheme.

Rotorua Lakes Council Injunction:

There was a hearing in the Māori Land Court on 17 July. Please refer to the RLC Tarawera Sewerage Scheme update on Page 3.

Tarawera Reticulated Sewerage Scheme:

The LTRA committee met with the Working Group on Sunday, 28 July and the two LTRA Committee members on the Working Group continue to participate collaboratively with the other four members of the Working Group within the constraints of the agreed Terms of Reference for the Working Group.

It is fair to say that there are differences in philosophical approach to reticulation between the LTRA committee and its two representatives on the Working Group on the one hand and the other four representatives on the Working Group on the other. It is probably also fair to say that the other four representatives of the Working Group would like some of the constraints of the Terms of Reference relieved to enable the Working Group to give full effect to their desired strategy on reticulation. Notwithstanding these differences, the Working Group members continue to work collaboratively and respectfully with each other with the common goals of a cap of 50% contribution by the community, the lowest price per connection as possible and ideally a cap on total cost including GST per connection.

The philosophical approach to reticulation of the LTRA committee referred to above can be summarised as follows:

The LTRA committee believes that to protect lake water quality for now and the future and to keep costs as low as possible, reticulation should happen as soon as possible.

The committee believes that a respectful collaborative approach to discussions with local and central government is best, as opposed to a more aggressive or even combative approach.

Whilst the committee continues to work with the Working Group on further funding from RLC and BOPRC, the committee believes that building over the medium to long term a relationship with Te Arawa Lakes Trust may well turn out to be important in approaches to central government for funding.

The committee recognises that ultimately local government, subject to statutory duties, have all the powers, including rating powers, to implement reticulation. It is not appropriate to characterise implementation of reticulation as an arm's length transaction between parties of equal bargaining strength who are willing but not anxious to implement it. Accordingly, the bringing to bear of skills relevant to what might be called 'the art of the deal' may well be less relevant than respectful, collaborative, medium to long term dialogue with relevant stakeholders.

... continued from page 2

Having regard to the above, the committee's position is that:

- It does not support residents delaying signing of or not signing DDL consent documents
- It does not support an aggressive media campaign criticising local government
- It does not and will never support any use or threat of litigation to halt or delay reticulation

The committee does support as noted above:

Continuing to work collaboratively with the Working Group within the constraints of the Terms of Reference.

A cap on the community's contribution of 50% of cost.

Pursuing further funding to reduce the price per connection as much as possible.

Seeking as far as possible a capped price per connection including GST.

A special thanks to Glenn and Shelly Barbour, for generously allowing the Working Group Community Meetings to be held at The Black Barn.

Keep well, warm and dry.

Kind regards,

Libby

LAKE TARAWERA
Sewerage Working Group



*Ehara taku toa i te toa takitahi, engari
he toa takitini.*

*My success is not mine alone, but it is
the strength of many.*

TERMS OF REFERENCE

PURPOSE:

To unite the community behind the Lake Tarawera Wastewater Reticulation Scheme.

OBJECTIVES:

A Lake Tarawera Wastewater Reticulation Working Group will be formed and has the following objectives.

- To assemble relevant information and lobby Rotorua Lakes Council (RLC) and other government agencies for additional funding the scheme with the objectives of:
- To ensure that costs to landowners connecting to the scheme are as low as possible.
- To provide cost certainty to landowners connecting to the scheme.

(Continued from page 3)

- To ensure funding equity to landowners at Lake Tarawera as afforded to every other community.
- Enable completion as soon as possible.

MEMBERSHIP OF THE WORKING GROUP:

Members of the Working Group will comprise a maximum of six including four community members who independently represent the interest of the community, the LTRA chair, and mana whenua representative. The chair will be agreed to by the Working Group. The Chair will not have a casting vote on any vote. On any vote each member will have one vote.

OPERATION OF THE WORKING GROUP:

Members of the Working Group will work collaboratively and seek to find consensus on any matter requiring a decision. On any decision where consensus cannot be reached and a vote is required the vote will be carried by a simple majority of members, provided that at least one member represents mana whenua.

The Working Group will have responsibility for drafting a strategy and managing its actions.

The Working Group will consult with the LTRA committee, the LTCG and members of the community and have due, proper and reasonable regard to their views before making decisions.

The Working Group will be an unincorporated body and remain so. It will not have any power to in any way commence or assist with any legal proceedings against RLC or any other government body which might be likely to delay or prevent reticulation by RLC.

The Working Group will report bi-monthly to the community including LTRA members and Lake Tarawera Community Group (LTCG) members until its purposes above are achieved.

The Working Group will not have any power to bind LTRA or LTCG and will work independently to achieve its purposes above.

The Working Group will have the ability to appoint independent advisors.

The Working Group will appoint someone to take Briefing Notes.

The Working Group will at all times be respectful of all stakeholders and members of the community and strive to develop relationships of trust and mutual respect.

The Working Group members must not act out of self-interest and will always work for the greater good of the community at large and with the goal of protecting the unique environment of Tarawera and water quality for all present and future generations to enjoy.

Members of the Working Groups must disclose and in consultation with members of the Working Group Manage appropriately any conflicts of interest arising.

Members of the Working Group will not be paid any fees or remuneration.



29 July 2024

Doc No: 20437587

Tēnā koutou Lake Tarawera Ratepayers' Association

Tarawera Sewerage Scheme update

Injunction:

Rotorua Lakes Council's application to the District Court for an injunction to prevent unlawful disruption to the Tarawera Sewerage Scheme was adjourned indefinitely in an oral decision delivered by Judge Clark in the Māori Land Court on 17 July 2024 – a written decision is to follow.

In his decision, the Judge confirmed that works on the road corridor can continue and any conduct that obstructs or interferes with the works could lead to an injunction being granted. The indefinite adjournment of the injunction application means it can be renewed on an urgent basis if needed in future.

Fulton Hogan is updating its work plan which includes reassigning machinery to the site and traffic management planning. A re-start date is yet to be confirmed.

Signing of Locality Plans:

DDL representatives are engaging with property owners to discuss proposed work and request signatures on Locality Plans. However, they report that the obtaining of signatures to date has been at a significantly slower rate than anticipated.

Signing of the Locality Plan records owners' consent to the construction on the ratepayer's property, its location, any Heritage NZ investigations necessary, and acknowledges there could be some location changes if required. The construction of the assets and connection to the house plumbing requires building consent. Signed owner permission on the Locality Plan is a necessary part of the building consent application process.

Please note that signing of the Locality Plan does not imply a person's agreement (or non-agreement) with the principles of the scheme, nor to any commitment to the payment of targeted capital or operational rates for the scheme. The requirement to connect to the scheme and to pay rates already exist in legislation and as a result of the decision-making processes followed by Council pursuant to that.

The team of RLC and the local contractor DDL are collectively making every effort to deliver the project at the lowest possible cost to ratepayers. Delays in obtaining owner permission to progress the physical work outside of the contractors control carry the risk of unavoidable extra costs to the project.

The project team respectfully request that after engaging with the DDL team, if property owners are happy with the proposed work on their property that the locality plan is signed without delay. However, if there are any further concerns, please contact the RLC project team who will be happy to discuss these.

📍 Civic Centre, 1061 Haupapa Street, Private Bag 3029,
Rotorua 3046, New Zealand

☎ +64 7 348 4199 | ✉ info@rotorualc.nz

🌐 rotorualakescouncil.nz

Document Set ID: 20437587

Version: 6, Version Date: 29/07/2024

... continued from page 3

Tarawera Transfer Station Changes:

Over the next few months, pump station works will alter the layout of the entrance to the Tarawera Transfer Station. It will remain open to the public during this time with traffic flow arrangements changing as various phases of work take place.

We appreciate your cooperation.

Ngā manaakitanga,



Russell George
Director – Infrastructure & Environment

📍 Civic Centre, 1061 Haupapa Street, Private Bag 3029, Rotorua 3046, New Zealand

☎ +64 7 348 4199 | ✉ info@rotorualc.nz | 🌐 rotorualakescouncil.nz

Document Set ID: 20437587

Version: 6, Version Date: 29/07/2024

LTRA—Incorporated Societies Act 2022

The LTRA Committee have begun the process of reregistering LTRA under the new Incorporated Societies Act 2022.

The first step has been preparation of a draft constitution that complies with the new Act and has regard to the existing rules. The approval of the new constitution will be on the agenda for the next AGM in January 2025, to be approved by a majority of those members of LTRA entitled to vote and voting. If approved, the new constitution will be the constitution of the LTRA on reregistration of LTRA under the new Act.

The drafting of the new constitution focused on conforming it to the existing LTRA rules with some modernisation as well as complying with the new Act (based heavily on the Companies Act). With that in mind the draft could be described as vanilla and should not be controversial for members (in the way that constitutions are not usually controversial for shareholders).

Your local craftsmen.



Bringing bespoke and intricate detail to life.
Whether you have an idea in your head, the plans
drawn up, or you're the architect on the project,
we're here to help.



tailoredbuilds.co.nz



John Goad 022 524 5741
Steve Webb 027 300 9804

BOPRC Freshwater Biosecurity Update

Te Wakaunua Te Kurapa Biosecurity Officer (Aquatic Pests) – Bay of Plenty Regional Council.

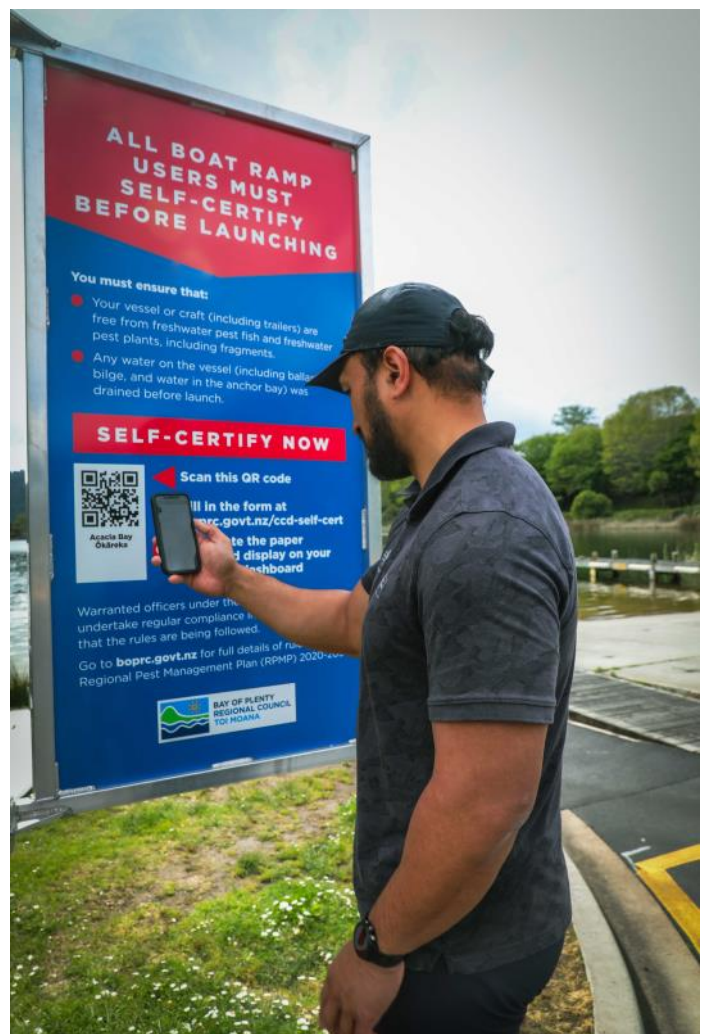
It was a busy summer period for aquatic biosecurity across the lakes, with 800 physical boat and trailer inspections at boat ramps completed, 97% of which passed. Checks included a thorough physical inspection of all parts of the trailer and vessel where freshwater pest fish or weeds might be hiding. While the figures are encouraging, anything less than a 100% pass rate has the potential to spread new aquatic pests to new locations.

Compliance with Rule 7 of the Bay of Plenty Regional Pest Management Plan 2020 – 2030 is crucial for the prevention of new aquatic pest incursions into our beautiful lakes. The rule which is now in its fourth year, requires occupiers of boats or craft using a boat ramp with a self-certification checkpoint, to complete a self-certification form and submit it either electronically or display it on the dashboard of the vehicle used to launch the vessel.

Over 3,000 boats & trailers were checked for self-certification compliance across the lakes between July 2023 to April 2024. Of those, a total 49% complied with the Rule 7 requirements which, while markedly higher than the average of 24% last year, it's still a disappointing result. Clearly there is still more work to be done in ensuring it becomes second nature to all boat ramp users.

In total over 1,451 people have taken the opportunity to use the new QR code self-certification form this summer which speeds up the process and removes the need for forms to be in stock at the boat ramp.

As always, we appreciate your help as locals in doing the right thing and helping to educate your visitors by following both the self-certification rules and Controlled Area Notice (CAN) rules put in place to protect against gold clams (*corbicula*). Even though we have now entered the quieter winter months its key that people remain vigilant in undertaking the check, clean, dry, certify protocol – particularly anyone coming from the Waikato area.



(Continued from page 8)

Nationally over the past year more than 2,200 water samples from 255 sites have been tested for gold clam (*corbicula*) DNA with no further infestations have been detected outside of the already known sites on the Waikato River and the Lake Taupō Aqua Park. Subsequent testing showed the clams present in the Aqua Park lagoon are a different type of corbicula from those found in the river, with the Aqua Park containing *Corbicula australis* rather than *Corbicula fluminea*.

Community Centre Update: Claire Stewart

Regular events

- * Tai Chi Weekly: **Thursdays at 2.00pm**
Contact Alison Walker for more info **07 362 8151 or 021 100 5425**
- * Friday Night Drinks: Every Friday from 5.30pm. All welcome. BYO drinks and nibbles



Working Bees on the hall buildings and grounds

Held the first Sunday of every month at 10.00 am.



Lake Kids

Regular catch ups planned. Join the Facebook group to find out more: www.facebook.com/groups/lakekids/.

If you know someone who is a member who is not receiving our emails please forward this email and ask them to [click this link to subscribe](#).

If you have any further questions regarding the Lake Tarawera Community Group please contact Claire Stewart on clairemariestewart@gmail.com



HELP STOP

Freshwater gold clam

The freshwater gold clam (*Corbicula fluminea*) is a small shellfish that reproduces rapidly. It can clog water pipes and may overrun native species. First found in the Waikato River in May 2023, it is an unwanted organism under the Biosecurity Act.

To stop gold clam from spreading to the Rotorua Te Arawa Lakes we need you and any visitors that you have coming this summer - particularly from the Waikato - to do their bit and follow the rules.



Got guests coming from the Waikato?

There are specific rules that apply to users of the Waikato River in the 'controlled area' which covers from the Whakamaru Dam to the river mouth at Port Waikato, including Lake Karapiro.

- **No wake boats** from the controlled area can be used on Bay of Plenty waterways or other waterways in New Zealand.
- **All river users that have been in the controlled Waikato area must follow Check-Clean-Dry requirements** for any craft, gear (such as fishing and other equipment used to gather kai) and equipment (including water skis, wakeboards, and inflatable pool toys).
- **Any boat that has been in the controlled area in the last 30 days** must be cleaned at the designated wash station.

DESIGNATED STATION: The Wash Place, 38 Te Ngae Road, Rotorua ►



Protect the Rotorua Te Arawa lakes you love

The Bay of Plenty Regional Pest Management Plan (RPMP) 2020 – 2030 requires that all boat ramp users must certify that their vessel (boat, jet ski) and trailer are free from freshwater pests.

- Complete a self-certification form before launching. The self-certification form must either be submitted electronically or displayed in the vehicle and left at the boat ramp where the boat was launched.
- Self-certification stations are at boat ramps, with paper forms available to fill out or QR codes to complete the process online.

Throughout summer Biosecurity staff will be checking the boat ramps regularly for compliance.



To find out more on the latest rules and gold clam status go to
www.biosecurity.govt.nz/clam



**BAY OF PLENTY
REGIONAL COUNCIL
TOI MOANA**



Experienced, fully Registered Electrician
available for all your wiring jobs.

Broken lamp? Oven needing new elements?
Power points: old, broken or you need a few
more or USB charging outlets? Lights need
attention or upgraded to LED?
No job too small—call today!

Merlin Sheffield
Registered Electrician, Rotorua

P (07) 362 8572
E merlselectrical@gmail.com



WANTED

Empty 15 litre water bottles for protecting
young native plants from rabbits at

Kariri Point and Rangiuru Bay



Please drop off to 214 Spencer Road,

AED's 1&2

(Heart Defibrillator)

Lake Tarawera Fire Station

(Secure external cabinet by front door
and in the crew's medical kit)

Stoney Point Reserve

151 Spencer Road

Lake Tarawera

Phone - 111

(Does not require phone reception)

for cabinet combination

from Ambulance

Communications 24/7

AED 3 The Community Hall

475 Spencer Road

Accessed through main door with key
from lock box or call George Gilmour
for key

027 282 9034

AED 4 At the Buried Village

AED 5 11 Rangiuru Bay Rd

(No phone needed)

This is the farthest house on the right of
Rangiuru Bay as you look out to the lake

Access across Rangiuru Bay Reserve or
down Rangiuru Bay Road

Private Property—Please Respect



Fish & Game Update July 2024: Matt Osborne

There's plenty of great shoreline angling still available at Lake Tarawera throughout the winter period. The open winter shoreline fishing area extends from the 'black, yellow and white' landmark pole at The Landing carpark right around Spencer Road to the landmark at the end of Otumutu Lagoon. Fish & Game's hatchery release program selects parent brood fish between April and the end of August with the aim being that their progeny will also be spread out in their return timing to create opportunities for anglers.

Great spots for anglers to visit include the Landing, Orchard, Rangiuru Bay, Stoney Point, Waitangi Bay, Otumutu Lagoon or any of the jetties running out into deepwater. An easy rig for fly fishers to have success with is a slow sinking line with a woolly bugger, or a fast-sinking line with a short trace and 'boobie fly'. Spin fishers can use tobys, veltics, tassies or a small sinker with short trace and 'boobie' fly or glo bug, or a soft bait.

The trout have been in fantastic size and condition this year. In fact, the Te Wairoa fish trap spawning run has shown the best fish that the lake has produced in the past 20 years. Hatchery origin three-year-old spawning fish have averaged 590mm and 2.9kg. That's 500g (0.5kg) heavier than the same aged fish running up the Te Wairoa Stream last winter.

Lake Tarawera along with Rotoiti and Okataina closed to boat fishing at the end of June and will reopen to boat angling on 1 October. Remember there's plenty of other lakes close by that are open year-round to boat fishing such as Okareka, Rotorua, Rerewhakaaitu and Rotoma.

June, July and August -

Our WINTER SALE is on NOW!



**BOAT
SERVICING -
20% OFF LABOUR**

Book your boat or Jetski in for service from June to August and we will discount the labour 20%



Sweet right?

FREE PICK UP AND DELIVERY
FREE TRAVEL FOR
ONSITE SERVICING

Don't forget your trailer - now is the time to get it ready for next summer. Ask us about **CORROSION^X** application.



**10% OFF
MINN KOTA &
ELECTRICAL PACKAGES**

when you purchase and book the install with us





Thinking of repowering – now is the time to talk deals!

Call us on 07 345 9854






Enjoy your boat next summer – don't have it stuck in the shop getting repaired



A WINNING COMBINATION

Jenny Donne and Bayleys are a winning combination at Lake Tarawera.

Working here with buyers and sellers is my passion and with over 12 years of experience, it has become my speciality.

Contact me for a comprehensive, confidential market appraisal.

Jenny Donne | Rotorua Lakes Specialist
P 027 385 0566 E jenny.donne@bayleys.co.nz

Proud sponsor of the Lake Tarawera Sailing School

BAYLEYS REALTY LTD, BAYLEYS, LICENSED REALTY BROKER ACT 2004

Lake Tarawera Sailing

Laser Coaching 23 March 2024

The last couple of seasons have seen a resurgence in adults learning to sail at Tarawera Sailing. They are mainly parents who assist on club days managing the children's sailing programme and then become hooked on sailing themselves. This has led to a steady upgrade of our Laser fleet and the advent of evening sailing for adults. There is now a core group of very keen adult sailors regularly sailing in the evenings.

While searching online for sailing gear Claire Stewart made contact with Helen and Rick Spencer who are very competitive masters sailors in the Laser Radial class. They sail on Saturdays with Hamilton Yacht Club and then travel each Sunday to race in Tauranga.

Helen and Rick have a long association with Lake Tarawera including racing (and winning) in the annual New Year's Day race. Given their connections to the lake, Helen very kindly suggested they hold a Laser coaching day for our group of entry level Laser racers.

Helen and Rick brought their pristine Lasers fully fitted out for with the latest gear to the lake for the day. In the morning the group was treated to a full description of the equipment and in particular the importance of each of the sail controls under the range of sailing conditions.

In the afternoon we rigged our own Lasers, several with gear loaned by Helen and Rick – including one using a full Radial rig with carbon spars! While the light winds and drizzle were not ideal conditions for sail coaching, the advantage was that the fleet stayed together with Rick and Helen able to coach each

(Continued on page 14)

(Continued from page 13)

sailor with go fast tips which we could all pick up on.

It was a very successful day and a great insight into performance sailing. We remain in touch with Helen and Rick who have given us valuable advice on key upgrades for our fleet of donated Lasers.

Many thanks again to Helen and Rick!

Regatta Day 14 April 2024

The end of season regatta is the highlight of the year. The regatta format was established by Pat and Ian Thorpe in the early days of the club. There is a lot of fun racing including the championship races, a lottery challenge and a pirate relay which are followed by a prize giving.

Both the young sailors and adult sailors were able to show their skills learnt during the season including boat handling, sailing a triangular course and following the racing rules. The races were fiercely contested and provided much fun for both competitors and spectators.

We had a stunning day with light but reliable wind making conditions for the regatta the best for some years. Superbly organised by Carol Gilchrist the racing programme provided continuous, exciting action all afternoon.

The prize giving for the season was held at the conclusion of the racing and trophies were presented by Jenny Donne from Bayleys Real Estate which is a very generous sponsor of Tarawera Sailing.

A wonderful touch this year, was the surprise gift from club members of a very large and beautifully made wooden plaque presented to Pat Thorpe by two sailors, Claire Stewart and Erin Schulte.

The plaque is to be mounted on the sailing club building and reads:

LAKE TARAWERA SAILING TRUST Est. 1999 by Ian & Pat Thorpe



Claire Stewart, Jenny Donne, Pat Thorpe and Erin Schulte with the plaque.

(Continued from page 14)



Many thanks to our families supporting Regatta Day, our safety boat skipper Torrey Archibald, Dave Townsend on barbeque; and of course to Carol Gilchrist and Pat Thorpe for their excellent organisation.

Prizes presented to the sailors are as follows.

Championship Races:

JUNIOR (Firebugs)	1 st Laurel Papps	2 nd Hazel Iverson
INTERMEDIATE (Microns)	1 st Elsie Papps	2 nd Daniel Alexander
ADULT (Lasers and Spirals)	1 st Richard Bollard	

Season's Top Sailors:

JUNIOR	Laurel Papps
INTERMEDIATE	Jack Schulte
SENIOR	Daniel Alexander

Season Most Improved:

JUNIOR	Hazel Iverson
INTERMEDIATE	Spencer Stewart
SENIOR	Elsie Papps
ADULT	Erin Schulte



Season's Racing Award Daniel Alexander

Tarawera Sailing meets at Cliff Road at 2pm on Sundays, during the season (November to April)

Please contact Carol Gilchrist for all enquiries Ph: 0274 423333

(Continued from page 15)



Hanson Heating



Get affordable comfort now on ducted heat pumps

53 Fairy Springs Road | Phone: 07 346 2694
sales@hansonheating.co.nz | heatingsolutions.co.nz



*Purchase by 4:59pm NZST 30/06/24. Install by 4:59pm NZDT 30/09/24. Domestic and residential purchases only. Exclusions apply, see full terms and conditions. Cool Finance Offer available from selected finance-accredited Fujitsu installers only. Approved applicants only. Lending criteria, \$50 annual Account Fee, fees, terms and conditions apply. Minimum spend applies. Standard Interest Rate of 28.50% p.a. applies to outstanding balance at the end of LTF Interest Free Period. Minimum monthly repayment required. Credit by Q Card. Full terms and conditions available at www.fujitsugeneral.co.nz/promotions. The Promoter is Fujitsu General New Zealand Limited, 109 Port Road, Seaview, Wellington 5010.

Harbourmaster Report: Roly Bagshaw

Winter brings with it a slowdown of activity on the lakes. From the Harbourmaster team this gives us time to ensure maritime signage is fit for purpose, navigation aids are in position, inspected and cleaned as well as get some tree trimming done where the encroaching scrub starts to hide ski lanes, signage, and other navigational aids.

Our boats will also be out and about supporting other Regional Council teams with jobs such as water sampling, lake structure audits or transporting staff to those more remote areas to do their mahi.

If you're on the lake this time of year its likely you will have very little company, which means if anything does go wrong, help may not be readily available. This means you really need to be vigilant with your safety equipment, maintenance and taking those extra precautions before heading out.

Firstly, ensure the engine is in service. Any known issues should be checked and resolved. Batteries should be charged with a smart charger at least once a month, nothing kills batteries faster than lack of use and cold weather! Check the expiry date on your flares, run a VHF radio check (with Coastguard VHF Ch2). Most EPIRBs have a test function, and all have an expiry date, so check these.

At least every six months PFD's (Personal Flotation Device) Lifejackets will require checking. Look for wear and tear, make sure the fastening straps are in good order and the gas cylinder is in new condition. For detailed information on how to check and maintain your PFD you can look at manufacturer information. PFD's can come in different types and styles so skippers please ensure everyone on board knows how to correctly put them on and how to use them. Kids jackets should all have crotch straps.

Prior to departing, ensure someone knows where you are and when you'll be back by submitting a trip report with Coastguard on VHF Ch2, or text the details to a friend or family member.

Check the weather! It's cold both in and out of the water so dress to stay warm and plan your trip around the forecast. If the weather deteriorates take shelter or come home. There is always another day to go out.

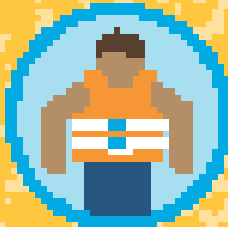
It should go without saying all people on paddle craft must be wearing a lifejacket. The beautiful calm winters days can easily lull you into thinking your safe. A change in weather is your biggest enemy so again plan your trip, play it safe as being separated from your SUP, kayak or small boat can have serious consequences.

It still a great time of year to be on the water and enjoying the beauty of our region but please take the necessary steps to be prepared, warm and return safely!

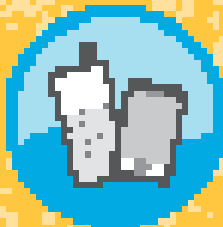
New Patrolling Crew Wanted

We are seeking crew for the upcoming patrol season. Applicants should have a particular interest in keeping communities safe on the water, be reliable and willing to upskill with working on vessels and public engagement. Full training provided. If this sounds like you then give us a call on 0800 5knots or drop me a line roly.bagshaw@boprc.govt.nz

The boating safety code



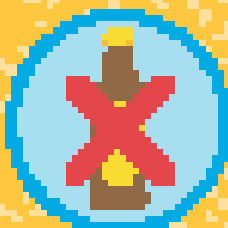
Always wear your lifejacket



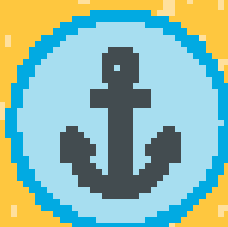
Take two waterproof ways to call for help



Check the marine weather forecast



Avoid alcohol



Be a responsible skipper

boptic.govt.nz/safeboating



Lake Tarawera Pest Control

Rats

In the last Phantom I outlined our latest rat baiting strategy which is basically baiting when the rats are the hungriest. I have been using tracking tunnels to calculate the base line population versus the reduction in numbers over time.

While it is not precise science there is a definite reduction in rodent numbers after baiting started and the amount of bait consumed has spiked after rebaiting which all points towards a lowering of rodent numbers.

Some people have contacted me to say they think they have rats in their ceilings. One thing about rats is they consume a lot of water, they don't go up to your ceiling and stay there - they drink a lot of water for their body weight. Because of this they come down from above your chandelier to drink outside. Some people throw bait in the ceiling but I would not do this as it associates the area with food and there is a definite possibility of decaying rat bodies above your bed.

Because of the need for water, the rats will be outside foraging for water and food so a well-sited bait station should capture the evil doer.

I have some traditional rat traps if anyone wants any to capture a bait-shy rodent.

Possums

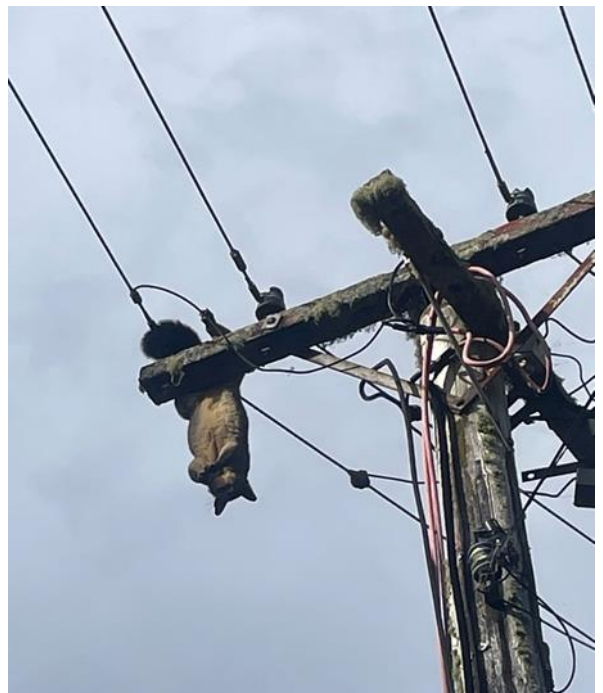
We were wandering along Waitangi Rd in May when we encountered Claire, Spencer and Penny Stewart staring skyward at a poor unfortunate possum caught in the wires. He was well dead but it did make me wonder why in the hell would the possum expend all that energy to scale the power pole for zero food, and ultimately meet his maker.

Hopefully no one was underneath the pole when he did eventually come to earth!

Wasps

We had a very successful season of dealing to wasps, my tally was 23 nests eradicated and I think an overall reduction in wasp numbers, wasps are very hard to count.

I'm sure in 2025 they will be back !



Ratmeister

Email: rats@eol.co.nz

Phone: 029 575 0943



THE BLACK BARN

LAKE TARAWERA



Escape the everyday for your next event..

Weddings - Private gatherings - Corporate Events



theblackbarnlaketarawera



The Black Barn, Lake Tarawera

www.theblackbarn.co.nz
info@theblackbarn.co.nz
027 631 1970

Image by Grace Jones Photography

Message from Rotorua Mayor Tania Tapsell

Greetings Tarawera residents,

Our Council extends a heartfelt thank you to everyone who provided feedback and submissions on our Long-term Plan proposals.

Having carefully considered the feedback received, we made some changes to what was first proposed and have provided a 10-year plan that delivers smart investment in what matters most and minimises, as much as possible, the financial impact on the community.

Investing in reliable infrastructure that protects our community and our environment is a priority for this Council which is what the majority of spending will go towards.

We have approved an increased per household council contribution (from \$1,500 to \$2,700) for sewerage schemes. Council staff will also continue to seek additional funding for the Tarawera Sewerage Scheme from Central Government and Bay of Plenty Regional Council.

We also introduced a short-term accommodation rate. Based on feedback, we reduced the proposed amount by 40% to ensure fairness. We also made it simple by excluding granny flats, spare rooms or single rooms. The rate applies if you advertise a whole dwelling as available for 60 days or more per year.

Other key elements of the adopted Long-term Plan includes our first draft Environmental Strategy to contribute to environmental restoration and protection.

Additionally, we are investing in our inner city to grow our economy and rebuild our reputation. Restoration of the Museum building, which received overwhelming support from our community, is also a significant part of this plan.

We are ambitious for Rotorua, but also realistic. We can't have it all, so have paused, reduced or stopped some spending to minimise rates as much as possible.

We're confident this plan sets the pathway to not only succeed through challenges, but to also achieve better community outcomes for our district and our future.

Kindest regards,
Tania



Recycling changes from 1 Feb 2024



FOR MORE INFORMATION ON RECYCLING GO
TO OUR WEBSITE

WWW.ROTORUALAKESCOUNCIL.NZ/RECYCLING

Can I recycle this?



Most Kiwis can now
recycle the same things from
home. Here's how you can
recycle right.

Recycling



Here's what you can
put out for recycling.



Plastic bottles, trays
and containers numbered
1, 2 and 5 only



Food and drink tins
and cans



Paper
and cardboard



Glass bottles
and jars

Take off the lids, rinse out your dirty items,
and put them out for recycling.



Yes



Here's what you can't
put out for recycling.



Compostable
packaging and
containers



Nappies
and sanitary
products



Lids from
bottles, jars
and containers



Fabric and clothing



Soft plastics



Polystyrene



E-waste



Coffee cups and lids



Aerosols



No

TIP: Before you put an item
in your rubbish bin, consider
whether it can be reused or
recycled elsewhere.

From Feb 1 2024 what you can recycle in NZ has changed. To avoid contamination of materials to be recycled, please familiarise yourself with **what can be recycled**. Our Tarawera Transfer station is a valuable community resource – let's not jeopardise it! Please do your part.

Can I recycle these?



Plastic bottles, trays
and containers numbered
1, 2 and 5 only



Food and drink
tins and cans



Paper and
cardboard



Glass bottles
and jars



Yes

Take off the lids, rinse out your dirty items,
and put them out for recycling.

Get up to date on recycling right at
www.rotorualakescouncil.nz/recycling

LTRA: Current Committee

Chair: Libby Fletcher libby@ultimatenz.com

Secretary: Martin Wiseman martin.wiseman@dlapiper.com

Treasurer: Richard Noke noke@eol.co.nz

Committee:

Terry Beckett: becketts.tb@gmail.com

Ray Gatland: gatland@extra.co.nz

Peter Fahey: taraweralandcare@gmail.com

Jane Spear: janespear2011@gmail.com

Karen Walmsley: taraweratrail@inspire.net.nz

Fiona McAllister: fiona@betterwords.co.nz

Rotorua Lakes Community Board Contact:

Chairman: Phill Thomass phill.thomass@rotorualc.nz

Lake Tarawera website: www.laketarawera.org.nz

Phantom Editor: Fiona McAllister Email: fiona@betterwords.co.nz

Useful Numbers



Emergencies: Police/Fire/Ambulance/Coastguard 111

Tarawera Fire Unit: Chief Fire Officer:

George Gilmour 027 282 9034/07 362 8378 gilmour06@gmail.com

Deputy Chief Fire Officer: **Steve Gatenby** 0274 664 161 steve.gatenby@til.co.nz

Station Officer: Murray Dillner 021 290 0376 murrayedillner@gmail.com

Rotorua Hospital: 07 348 1199

Lakes Primecare Accident/Urgent Medical: (1165 Tutanekai Street, Rotorua), 07 348 1000

Poisons Urgent Info: 0800 764 766/Non Urgent 03 474 7000

Rural Delivery -Jan & Glen Harmer: 07 349 1254/022 153 6894

Security – George Gilmour 07 362 8378 gilmour06@gmail.com

Rotorua Lakes Council: 07 348 4199

Bay of Plenty Regional Council: 0800 884 880

Department of Conservation: 07 349 7400

We currently have five AED Defibrillators on Spencer Road:

1&2/ At Fire Unit– 151 Spencer Road 3/ The Community Centre 4/ The Buried Village

5/ On the front deck of 11 Rangiuuru Bay Road (last house on right of Rangiuuru Bay Reserve)