

THE PHANTOM

Winter 2022



Chair Report: Libby Fletcher

IN THIS ISSUE:	PAGE NO.
From the Chair	1-3
Gardener Wanted	
Tarawera Landcare (2115)	4-6
The Community Centre Update	7
Jenny Donne Bayleys, Collab Elect.	8
Tarawera Pest Control	9-10
Tarawera Transfer Station	11
Sewerage: What you need to know	12-13
Merlin Electrical , Spring Fair, AED 's	14
Telfer Marine	15
Community Garden	
BOPRC—Harbourmaster	16
Meet a Local (Terry Beckett)	17-19
RLC Update	20-21
Local Body Elections	22
Birthday Greetings	
LTRA Committee/Useful Numbers	23

Hello Everyone,

Welcome to the winter edition of the Phantom.

The good thing about the incredible rain we have been experiencing is that water tanks will now be full, and the lake level has risen.

Tarawera Sewerage Scheme

The LTRA committee have been working incredibly hard this year on the sewerage, with meetings with Rotorua Lakes Council, and Regional Council. We have also attended meetings with the Te Arawa Lakes Trust Strategy Group and more recently were at the Strategy, Policy and Finance committee meeting, where we had the opportunity to speak.

By now you should have received an update letter from RLC, if you have not received this letter, please let us know and we will forward a copy to you. Please use the LTRA email address – ltra@xtra.co.nz

There is more information regarding this letter further on in the Phantom and we urge you to read this, it is important.

(Continued on page 2)

(Continued from page 1)

Cell Phone Tower for Tarawera

The Rural Connectivity Group are working on the final details for the cell site proposed to be positioned on Spencer Road. A landscape and visual assessment has been completed by a landscape architect to submit with the resource consent. The resource consent will shortly be submitted to Rotorua Lakes Council. The LTRA have written a letter of support on behalf of the Lake Tarawera community for the resource consent. Due to the overwhelming support for the proposal the Rural Connectivity Group has a high degree of confidence the application will proceed on a non-notified basis. The plan is to be able to build the site this summer.

Toilet Block Upgrade

Work will begin in early July to refurbish the Stoney Point toilet block with four new larger unisex and disabled accessible toilet/change spaces added. The entrances will also be reoriented to face the more active carpark area rather than the lake. Rotorua Lakes Community Board is contributing funds to the project, it is expected to be completed by September.

Local Body Elections October 2022

If you wish to vote in the Local Body Elections and you live in one area and pay rates on a property in another area. You may qualify to vote in both areas at the local authority elections this October.

The place you live makes you a 'residential elector'. This is based on the address you have given previously when enrolling.

However, if you also pay rates to a different council from where you live, you may also be eligible to enroll as a 'non-resident ratepayer elector'

To vote in a different election from where you live, you need to get onto the ratepayer electoral roll.

Only one person can be the ratepayer elector and you have only one vote in this situation.

The person nominated to being the elector must consent to the nomination and cannot be a ratepayer elector for any other property.

The person nominated and the person nominating:

Must be registered as Parliamentary electors and

Must live at an address outside that council area where the property is located.

If you are not on the roll but think you qualify?

- Contact Rotorua Lakes Council
- Confirm you qualify
- Ask for an Enrolment Form for Ratepayer Electors
- Complete the form and send it to your local electoral officer to enrol

If you have any questions, please call 0800 548 683

(Continued on page 3)

(Continued from page 2)

Devastating Fire at 253 Spencer Road

What an amazing community we have at Tarawera, the support that the family received after this terrible fire was incredible, meals, groceries, and clothing. On top of that the family's cat was shot and through the generosity of the community, the vet's bills were covered.

I am sure like me for most it was a wakeup call, this could happen to anyone of us, the number of people who I have spoken to since have installed fire extinguishers and are checking their fire alarms regularly.

Lake Tarawera Volunteer Fire Brigade

This is a great opportunity for me to thank the fire brigade, they are all volunteers, and it is an incredibly tough job. I saw that firsthand when the team was at the community garden at Easter with the bonfire. However, this fire was unbelievable in its intensity and the Tarawera fire team were there all day. It was disappointing that there was criticism at the time it took for them to get to the property, considering they were first on the scene and were pumping water up to the house. I was told that the water tankers that came from Rotorua were emptied in 11 minutes, so it was vital that there was more water available.

I was saddened to hear that Barry Prior died on 13 April, our sympathies to his family and friends, he will be missed. Barry was a previous Chairman of the LTRA.

Stay well, warm, and dry and for those of you who will be visiting for the school holidays, enjoy your time at Tarawera.

Best wishes,

Libby

WANTED: Green-fingered Gardening Enthusiast!

Shelly and Glenn Barbour up at **The Black Barn, Lake Tarawera** are looking for a green-fingered gardening enthusiast to help them look after the ever expanding gardens and grounds at their venue.



This would be a paid part-time position with small but flexible hours to suit or a more casual contractor-style arrangement. The work is mostly weeding garden beds and general caring for plants - Glenn is on hand for the more heavy duty tasks. Experience is preferable but really if you are friendly, reliable and have a passion for gardening we would love to hear from you.

Email Glenn at barbourholdings@gmail.com

Lake Tarawera Landcare: Pete Fahey

The main story for Landcare at the moment is all the good work being done by the volunteers at the Otumutu Lagoon area and the access track being opened up between there and Te Karamea Bay. The team is ably and enthusiastically led by Dave Townsend and Carol Gilchrist. Every Wednesday for the past few months this busy team has been flat out removing pest plants and creating access for people and equipment. Once the weeds are under control we will be replanting with natives. What is most heartening is the support from the community. This has been very encouraging.

This access-way has proven to be very popular with locals and visitors alike in the same way as the Kariri Point project has been.

A very successful, well attended community BBQ was held at Otumutu Lagoon on Easter Sunday to show off the work done. It was great to see so many familiar faces and a few new ones too. The dedicated local Tarawera Fire Unit took advantage of a large pile of rubbish (from the clearing efforts) that was too big for the mulcher, building a fire break, setting fire to the bonfire and of course putting it out. They are a well trained committed crew who deserve full support. It looked like hot, hard work to those of sitting back, enjoying a beer! (*Right: Yours truly on the Weber.*)



There is still plenty of work to be done at Kariri Pt to keep the nasties at bay but we always knew that this would be an ongoing mission. The last couple of working bees have been cancelled due to the inclement weather but we'll be back on track soon enough.

Both RLC and BOPRC have been as usual, very supportive of the work being done.

We encourage anyone who would like to become part of either of these projects to come along. It's a great way to meet your neighbours and do some worthwhile toil in the community.

Otumutu Lagoon—meet at 10.00 am Wednesdays down by the community gardens

or contact Dave Townsend for more info: dave@townsendassociates.nz

Kariri Point—meet 9.00 am on the second Saturday of the month at the entrance to Kariri Point

or contact Pete Fahey for more info: taraweralandcare@gmail.com

Lake Tarawera Landcare Easter BBQ



Chris Gilmour



Louise Armstrong, Tony Begbie and Greg Magnus



Debbie Morris and Arna Hagaman



Ange & Dave Taylforth; Lynda Fletcher



Paul & Nicky van Praagh; Liz Cooper & Anna Smith; Claire Stewart

Liz & Phil
Cooper

Anna
Smith

Claire &
Penny
Stewart



Community Centre Update: Claire Stewart

Regular events

- * Tai Chi Weekly: Mondays 10.00 am
Contact Alison Walker if you are interested in coming along on: aire@xtra.co.nz
- * Friday Night Drinks: Every Friday from 5.30pm. All welcome. BYO drinks and nibbles.

Working Bees on the hall buildings and grounds

Held the first Sunday of every month at 10.00 am. #



Lake Kids

Regular catch ups planned. Join the Facebook group to find out more: www.facebook.com/groups/lakekids/. Picture from our latest Lake Kids family catch up.



Membership Fees

Thanks to all those who have recently paid fees. Fees go towards costs such as insurances, building warrant of fitness, electricity and general maintenance and are paid annually. The hall also generates a small additional income from renting the hall to members and non members. Members enjoy the benefit of having this facility in the community and invitation to attend the community events which are run here as well as a discounted rate for their own rental of the hall (see below).

Annual Membership Fees 2022: \$30 per family – Due July

Payment to be made by internet banking to:

Account name: Lake Tarawera Community Group

Account number: 03-0415-0068074-000

Reference: Please include your name

If you know someone who is a member who is not receiving our emails please forward this email and ask them to [click this link to subscribe](#).

If you have any further questions regarding the Lake Tarawera Community Group please contact Claire Stewart on clairemariestewart@gmail.com

ALL OVER THE LAKES

BAYLEYS

SUCCESS REALTY LTD. BAYLEYS, LICENSED UNDER THE REA ACT 2008



Jenny Donne - Lakes Specialist

I am experiencing a high rate of buyer enquiry at the moment so if you are thinking of coming to the market please give me a call. The Lakes market has been my speciality for over 11 years which gives me a wealth of knowledge of the local community plus being backed by the Bayleys brand with strong national and international links gives your property a leading edge in today's market.

Thinking of coming to the market? Call me today for a free, no obligation, confidential appraisal.

Jenny Donne Lakes and Residential Sales

P 07 349 5356 | M 027 385 0566 | E jenny.donne@bayleys.co.nz

ALTOGETHER BETTER

Residential / Commercial / Rural / Property Services



COLLAB ELECTRICAL

LAKE TARAWERA + ROTORUA + BEYOND

YOUR LOCAL LAKES SPARKIE

With over 10 years experience

WE SPECIALISE IN RESIDENTIAL
AND COMMERCIAL ELECTRICAL

Interested in working with us? Let's collaborate!
Give Jamie McIntosh a call or email

022 173 9048

info@collabelectrical.co.nz

www.collabelectrical.co.nz

WANTED

**Empty 15 litre water bottles for protecting
new native plants from rabbits at
Kariri Point and Rangiuru Bay**



**Please drop off to 214 Spencer Road,
Lake Tarawera**

Lake Tarawera Pest Control

I am going to discuss four persistent pests: rats, wasps, possums and rabbits

Rats

How many times do I say that rats are not going away? This last month has been proof of this; four people have contacted me about rats in their ceiling/wall space. It is the old formula that as the weather get colder, the rodents look for a nice warm spot to winter over.

A lot of you will have been contacted by the Regional Council for them to log your bait station location, condition and variety; this is part of an upgrading of the base information we have about traps and trapping and it will hopefully feed into better decision making.

Bait availability has been an interesting topic. Why there are limited baits comes down to five things

1. **People not playing the game. It is a simple game, write down your details and**
2. **Say where you are going to use the bait**
3. **Don't take three buckets at a time and then**
4. **Write Joe Smith on the record sheet.**
5. **When you have taken too many baits previously—don't dump them at the transfer station unopened!**

We have been a bit too successful in baiting the area and using up the allocated bait in a shorter time than forecast, although usage has also been exacerbated by the five things listed above. Once the Regional Council bait allocation funding is used up there are not many other funding options. The LTRA has been very helpful this year, however, if this situation is to continue we need to cook up a bait supply Plan B.

The warm weather has allowed for a longer breeding season for rodents, and consequently there are more rodents to kill and more baits required to kill them.

Wasps:

It might not seem like it but we have had great success in reducing wasp numbers, I personally have dealt to 32 nests along Spencer Road and I know other people who have added to the tally. My 'Dump the poison and dash away really fast' technique has now been upgraded with the purchase of a proper veiled Bee Suit, which will allow a more precise delivery of the poison to the nest entrance and less chance of being stung.

If you spot a wasp nest please tell me and I will come and deal to it; not just wasps buzzing around but the actual nest. They are incredibly hard to trace back to a nest, but if you find the nest I have the 100%

(Continued from page 9)

cure for them. **You find them I deal to them.**

We will continue the use of Vespex in the yellow dispensers as this works very well. Also in association with the Regional Council, we are looking to remove some of the willows along the lake edge as they are host to the *Giant Willow Aphid* *Tuberolachnus salignus*. You may have noticed in summer as you pass by the lakeside willows they often hum like an electrical transformer. This is the wasps coming after the invasive *Willow Aphid* for a protein meal or for their frass (aphid poo) to eat the excreted honey dew (sugar).



**Giant Willow
Aphids on a willow.**

Possums:

There is an influx of possums lately; my suspicion is the wallabies have been attacking some of the easier food sources and now the possums, deprived of an easy meal are venturing into gardens for bit of fast food.

I have a number of Timms Traps if you want to borrow one to deal with a pesky possum.

Rabbits:

I thought I had cleaned most of them up but no—they live and breed again. The mild winter has not done much to reduce their numbers.

Finally, I plan to have the lake Tarawera Pest Control AGM in September/October, after way too long, COVID-19, lockdowns and other stuff, I will work on a date for the AGM.

The Ratmeister (& Waspmeister)

Phone: 029 575 0943

Email: rats@eol.co.nz



The Tarawera transfer station

Using the local transfer station correctly helps to lower the cost to maintain the facility, and maximise the amount of waste that can be recycled.



Disposing of household rubbish

Household rubbish goes into the red lid bins, in red plastic Council bags only.

To get more red bags, visit the transfer station during manned hours or call ☎ 07 348 4199 for more options.

Household recycling

Recycling goes into the yellow lid bins. This includes paper and cardboard, aluminium and tin, and only plastic items numbered 1, 2 and 5 (due to limited onshore recycling facilities in NZ).

Items that are commonly mistaken as recyclable are foil chip packets, polystyrene, tetrapak (long-life milk packaging), plastic bags and gladwrap. Please put these in the household rubbish.



Glass recycling

Glass recycling is sorted by colour.

Please remember to remove bottle caps and jar lids before recycling your glass items.

Items for landfill

If you visit during manned hours (Thursday and Sunday, 1 - 4:30pm), you can dispose of green waste or rubbish for the Rotorua Landfill Refuse Transfer Station.

Fees changed in July 2021, after changes to the national waste disposal levy and Emission Trading Scheme by Central Government. You can find out more about this on Council's website.



Help us keep your local transfer station tidy by reporting illegal dumping, on ✉ info@rotorualc.nz or ☎ 07 348 4199

ROTORUA
LAKES COUNCIL
Te Kaunihera o ngā Roto o Rotorua

Tarawera Reticulated Sewerage: Libby Fletcher

What You Need to Know

A number of people have contacted me since receiving the letter from Rotorua Lakes Council dated 01 July. We the LTRA Committee are totally committed to the Tarawera Sewerage Scheme and would like to see the Council proceed as soon as possible. We appreciate that you will be frustrated (as we are) that there is not a final cost as promised by Council. You will see that they are not satisfied with the costs they have received and are working at reducing them. Please read the letter and respond to it.

By now you will have received the letter from Rotorua Lakes Council (RLC), '**Tarawera Reticulation Scheme Update and Feedback Request**'. If for some reason you have not received this letter, please email ltra@xtra.co.nz and we will forward you a copy.

This letter follows earlier RLC communications to you on 7 March, 2022 and provides an update of the progress being made on the scheme design and the associated Council decision process.

You have been invited to give your feedback by 29 July, 2022. **It is important for each property owner to respond to this letter; should you choose to ignore this letter it will be considered to be in favour of Preference A.**

We, the Lake Tarawera Ratepayers' Association Committee, strongly recommend you support the scheme by choosing Preference A for the following reasons:

- A reticulation scheme is the only viable wastewater option for the Lake Tarawera community
- Further delay means a risk that the Ministry for the Environment funding of (\$6.5m) is lost. To retain this funding the \$6.5m has to be spent in the current financial year – July 01, 2022 – 30 June, 2023
- Further delay means increased costs – building costs are currently rising by 15% annually
- Further delay means unnecessary further decline in lake water quality
- Three Waters – with 22 territorial communities with a population of 800,000 residents in Entity B, which Lake Tarawera is in, our sewerage scheme would not be a high priority
- The onsite effluent treatment (OSET) is not an option as 170 properties are unable to comply with the OSET rules
- **There are NO alternatives**

Whilst we appreciate that having no final cost for the scheme is extremely frustrating, please be assured that the LTRA committee is doing everything possible for a better outcome for every ratepayer at Tarawera.

- There have been three committee members – Ray Gatland, Karen Walmsley, and myself on the funding group for the Tarawera Sewerage Scheme and we are very pleased that Councilors have agreed to a new capital repayment plan which is over a ten-year period
- We will continue to explore further funding for the scheme

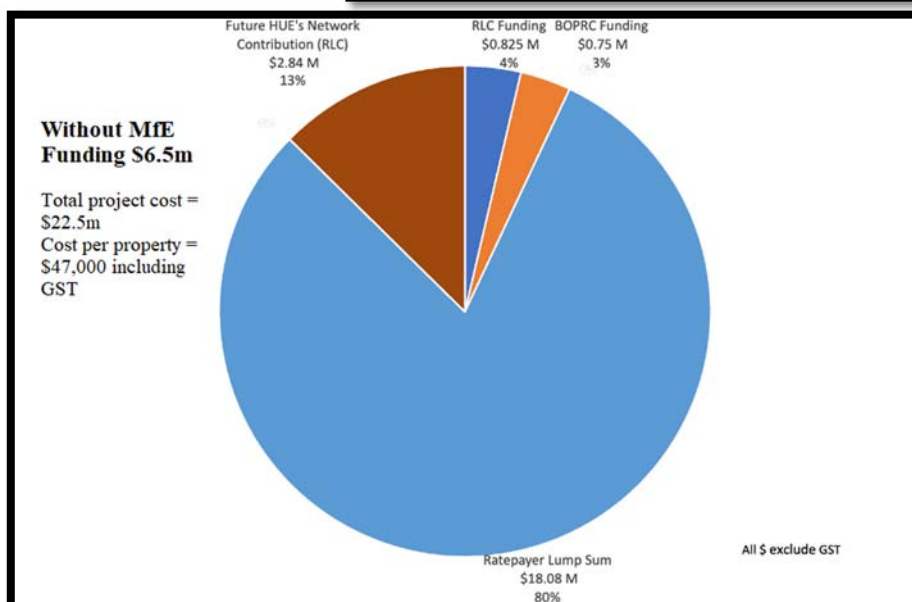
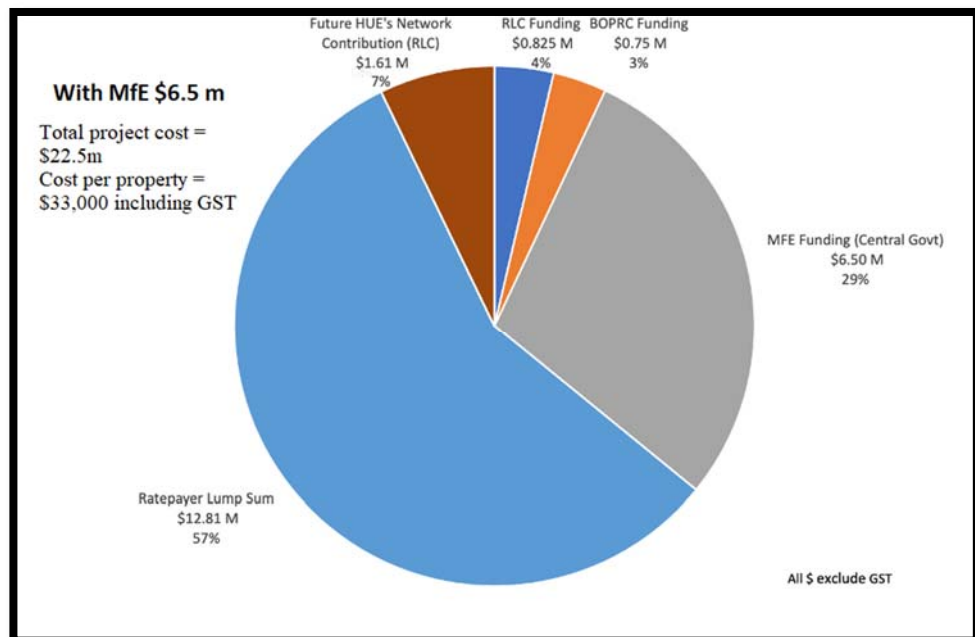
(Continued from page 12)

- The first sewerage scheme in Rotorua in 2006 was granted a subsidy of \$1,500.00 per property, as has each community scheme that has followed. With building costs rising by 15% annually we believe this should be increased.
- In the first week of April, I wrote to both Minister Parker and Minister Mahuta seeking an urgent meeting with them to discuss the Tarawera Sewerage Scheme. As there was no reply from either Minister, we wrote again later in April; to date we have had no response to the two letters.
- Ray, Karen and I attended the last meeting of the Strategy, Policy and Finance committee at Council where we were all given the opportunity to speak. It was at this meeting that the Committee gave its provisional support for the scheme to proceed in two stages, Stage 1 - the construction of the sewerage mains network and Stage 2 - Connection of all properties to the sewerage mains network.

Below are two Pie Charts based on the figure of \$33,000 that was quoted in February 2021.

One with the \$6.5m MfE funding and the second without the \$6.5m.

We simply cannot delay this scheme any further, please respond to the Council letter supporting Option A.





Merlin Sheffield
Registered Electrician, Rotorua

P (07) 362 8572
E merliselectrical@gmail.com



The Spring Fair is Back!

Last year COVID-19 restrictions meant the cancellation of the popular Lake Tarawera Spring Fair held annually at Labour Weekend—but not this year!

To book your stall contact:

Andrea Sheffield

laketarawerafair@gmail.com

\$25.00 a stall

(Child's stall: \$5.00)

AED 1 (Heart Defibrillator)
Lake Tarawera Fire Station
(Secure external cabinet by front door)

Stoney Point Reserve
151 Spencer Road
Lake Tarawera

Phone - 111

(Does not require phone reception)
for cabinet combination
from Ambulance



Communications 24/7

AED 2 (Heart Defibrillator) -
(No phone needed)

11 Rangioru Bay Road,
Lake Tarawera



Private Property—Please Respect

June, July and August -

TELFER  **MARINE**
ROTORUA

Our **WINTER SALE** is on **NOW!**

FREE PICK UP AND DELIVERY

FREE TRAVEL FOR
ONSITE SERVICING

BOAT
SERVICING -
15% OFF LABOUR

Book your boat or Jetski in for service from June to August and we will discount the labour 15%

Sweet right?

Don't forget your trailer - now is the time to get it ready for next summer. Ask us about **CORROSION^X** application.

10% OFF
SOUNDER & GPS
PACKAGES

when you purchase and book the install with us



Terms and conditions apply.

Thinking of repowering – now is the time to talk deals!
Call us on 07 345 9854

 **YAMAHA**
GENUINE
Parts & Accessories

 **YMF**
YAMAHA MOTOR FINANCE

 **YAMALUBE**

 **YMI**
YAMAHA MOTOR INSURANCE

Enjoy your boat next summer – don't have it stuck in the shop getting repaired

Newly Constructed Raised Beds at the Community Garden, Otumutu Lagoon

Isn't this a bit of ingenious recycling? If these timbers look vaguely familiar it's because they used to be something of a trip hazard on the upper part of Spencer Road. Due to popular demand the Council finally removed them and they've been cunningly repurposed by some handy locals including, Owen Dawe and Mark Duncan, into these useful raised beds at the Community Gardens. Brilliant!



It's your responsibility to **KNOW THE RULES**

Always wear your lifejacket

Take enough for everyone and wear them unless the skipper says it's safe to remove. Must be worn when being towed.



Always carry more than one way to call for help

A cellphone in a waterproof bag along with a VHF radio, flare or beacon.

IN AN EMERGENCY CALL 111

FOR WEATHER REPORTS, TUNE INTO COASTGUARD ON VHF 02

TO REPORT MARITIME HAZARDS, PHONE 0508 5 KNOTS



Meet a Local: Fiona McAllister

This month's 'Meet a Local' subject is Terry Beckett, for whom Tarawera has been a second home for most of his life. Terry and I are on the LTRA Committee together but the genesis of this piece came from me running into Terry at the local Eastwood café a few months back. Terry was with a group of men and hadn't seen me, but I approached him as they were leaving, and he explained he was on his 91st "Boys' Weekend". He briefly explained what that meant and I immediately thought it would make a great story worth sharing here. I hope you agree. Much of this story is in Terry's own words with a few additions from me.

Terry has fished since he was a small boy, initially at Rotoiti where his family holidayed and then progressing to Lake Tarawera, widely considered one of the best trout fishing lakes in the world. Hinting at his scientific background, he showed me three detailed books he has kept since the 1960s which record the date, weight, condition etc of every fish he has caught.

Beginning in 1974, when the first cup was donated by one of the boys, David D., the official "Boys' Weekends" commenced with a group of people Terry had been fishing with on a casual basis since the 1960s. Four of these fisherman had been friends since their days together at St Kentigern, while others were friends from other walks of life (sailing, university or work). At that inaugural weekend, rules were drawn up which have been religiously adhered to and never altered since. Initially there was one weekend a year in the autumn, but since 1978 there have been two weekends each autumn (in May and June), fly-fishing at Tarawera. Four of the original "Boys" still attend as the group rapidly approaches its 93rd weekend!



Young Terry at Rotoiti

There are specific rules attached to a Boys' Weekend. Fly-fishing is the only method the boys permit on Lake Tarawera and mostly between the hours of 0500-0800 on Saturday and Sunday, and then between 1600-1800, on Saturday afternoon and evening. The fly-fishing has evolved to mean fly-fishing off boats which makes the fishing more equitable.

There are three cups at stake. The main trophy is awarded to the boy with the most fish after deducting their handicap, and there are also cups for the Best Conditioned fish (based on weight and length) and the Heaviest Fish. Each "boy" has a handicap, calculated by dividing the fish caught over the previous four weekends by four. The handicapping works extremely well as evidenced by the



names on the trophy – which has been fairly shared around amongst the boys. Cup winners are required to get their names engraved on their cup and retain it until the next Boys' Weekend. The trophy for the heaviest fish, the silver cup pictured here, was donated by one of the boys. As they have run out of room on the actual cup, a silver base has been added to the wooden base to allow for future winners; Terry won it most recently. This trophy was donated by one of the boys in 1977 after his grandfather won it in an English yachting event. The winner of the main trophy also receives 50% of the kitty and must provide a bottle of champagne for the next Boys' Weekend. There is also a bottle of Bernadino of indeterminate age

which is awarded to the boy catching the poorest fish—which has never been opened—and probably never will be! The boys are all serious about wine so the champagne provided by the winner will be a quality drop and there is always a wine tasting over the weekend which involves a blind wine tasting.

(Continued from page 17)

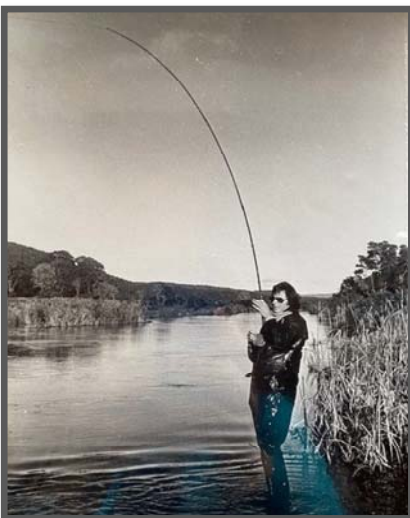
Currently there are six “boys” as sadly two died early. One widow requested they scatter her husband’s ashes at a favourite fishing spot early morning at one of their weekends. This widow drives a considerable distance each Boys’ Weekend to join the boys for dinner on Saturday night. She also provides an enormous crème caramel for dessert. Diana, Terry’s wife of 53 years and the other wives, all meet for dinner in Auckland on the Saturday night. There is probably much too much wine consumed and lots of long tales told about things that have happened over the years, at both of the dinners.

After the loss of two of their originals, two others who Terry knew through work, were invited to ‘audition’ over two consecutive weekends. Happily they made the cut and The Boys are six again. Both recruits have been successful additions with the first new member having caught 109 fish over 37 weekends and the latest member Malcolm also not disgracing himself over his 16 weekends to the extent that he won the main trophy at the 92nd weekend in June 2022.

Perennial favourites involve Terry finding a dead fantail on the grill of his car and not touching a fish all weekend; Richard B. being the only one to catch a fish at Rangioru Bay using a Pink Parsons that he had expertly tied after he had rescued a bird that had landed on his rod by walking back to shore; Hudson B. catching his first Waitangi stream mouth fish when he was preparing to cast and dropped his lure in the water at his feet, and Chris J’s blind fish caught at the Waitangi stream mouth.

Early on there was intense rivalry between boys with some even sneaking away for a fish at places like the Waitangi stream mouth—after others were asleep. In the 1970s and 1980s fishing was centred on the Te Wairoa stream mouth or the beach at the Landing in the morning and evening and the Outlet during the day. More recently all the fishing is from anchored boats and mostly near each other. This still does not prevent skulduggery such as trying to knock fish off at the net or blatantly lying about the number of fish each boat has caught. It is all great fun and an incredibly special time. On occasions they have a specially invited guest join them who may be a fishing guide, family member, or a friend or associate of one of the boys. While they can participate, they are ineligible to win the main trophy for most fish, as it’s based on handicap.

Over the years there have been some memorable catches, but the highlight was probably one morning in 1980 at the Te Wairoa stream mouth when they caught 16 fish, three of which were over the magical double figure (10lbs) mark. Twenty-odd years back, local fishermen refrained from fishing at Te Wairoa and The Landing, during the Boy’s Weekend. Regrettably, the size and quality of Tarawera fish has declined markedly over the last 30 years and no one is quite sure why. There is still a supposed commitment to manage the lake as a “big fish” lake but the current management team at Eastern Fish and Game seem reluctant to reduce or stop releases of fish to quickly ascertain whether there are too many fish in the lake for the available food supply. Currently there are two releases a year, in spring and autumn, totalling around 12,000 fingerlings; Terry would like this reduced even further. He submits the tallies from his log book annually to Fish and Game and the data clearly shows the decline in the size and condition of the fish.



Terry fishing The Outlet early 1970s

(Continued from page 18)

Despite all the boys having what Terry describes as “pretty big jobs”, it is extremely rare for anyone to miss a weekend; the dates are set a year in advance and lives planned around them, such is the commitment to the Boy's Weekend. The loyalty of the 'boys' to each other and the draw of their bi-annual weekends mean there are many more fish to be caught, much wine to be imbibed and of course many tales told. Terry personally aspires to emulate his father who lived to 100; a journalist he created the largest importing and publishing business in New Zealand, which Terry's two brothers were also involved in.



Boys' Weekend 1980



92nd Boys' Weekend dinner with Jo, Bob's widow



Some of the beauties Terry has caught while wading in front of his house

If you would like to share your story or suggest a local whose story should be told (or have something else for the Spring Phantom, due mid Oct), please email me: fiona@betterwords.co.nz

Rotorua Lakes Council Update: Demi Arbuckle

Tarawera Landing Redevelopment update

The Tarawera Landing redevelopment project is well underway, with the site preparation, earthworks, drainage, pavement preparation, pedestrian plaza, shared space, kerbing and boat ramp complete.

The rain gardens, boardwalk and lawn areas are currently in progress and the final concrete pours, line marking and rock wall repair will commence from mid-July.

Due to delays, the completion of the land-based works are anticipated to be completed by late July and the boardwalk by mid-July.

Council are working with Bay of Plenty Regional Council to obtain a consent amendment to begin the jetty, while protecting the trout and native fish spawning, as well as the dab chick breeding that happens in the lake between May and December.

Read the full update on our website here rotorualakescouncil.nz/taraweralandingupdate

Artist's impression of the Landing Redevelopment



KEY

- | | | | |
|---|--|---|------------------------------------|
| 1 'No park' area for backing boats/ wash down | 6 Entrance to 'Punaromia'- location for Pou or similar (dashed area) | 10 Existing jetty | 15 Boat parking (orientation TBC) |
| 2 Realigned Jetty (1.5m wide) | 7 Level concrete pedestrian plaza space | 11 Reconstructed steps, handrail and balustrade | 16 Ramp to beach |
| 3 Vehicle ramps to vehicle crossing | 8 Picnic lawn space | 12 Future building location | 17 Access for maintenance vehicles |
| 4 Slow vehicle crossing - shared space | 9 Jumping pontoon 1.5m high TBC | 13 Bus stop | |
| 5 Existing steps | | 14 Timber boardwalk | |

Stoney Point Toilet Upgrade

Shortly, work will begin on the Stoney Point Toilet block.

The existing toilet block will be refurbished while retaining some of the internal walls, receiving four new larger unisex and disabled accessible toilet/change spaces. The entrances will also be re-orientated to face the more active car park area, rather than the lake.

The [Rotorua Lakes Community Board](#) are contributing to this project through their allocated funding to improve services in the lakes areas.

Construction will start early July through until mid-September (weather depending), to coincide with the lower use during the winter period.



Kariri Point

Fiona
McAllister

Local Body Elections: 8 October 2022

YOUR home, YOUR community, YOUR whānau, YOUR future.

The local election on October 8th is **YOUR** opportunity to help shape the future of Rotorua.

What's Your Why?

STAND for Rotorua Lakes Council and let your **WHY** help shape our future.

Candidate nominations are open until 12 noon on August 12th.

You can stand for Mayor, as a councillor on the Māori, General or Rural Ward, or as a member of the Lakes or Rural Community Boards.

Information about standing for elections, local government, nomination forms and a candidate handbook is available at www.rotorualakescouncil.nz

VOTE for the candidates who share **YOUR WHY.**

Learn about candidates and what they stand for, and how they plan to shape the future of Rotorua.

Information on voting in elections and all things local government can be found at www.rotorualakescouncil.nz

If you're enrolled on the New Zealand electoral roll, you'll receive your voting papers in the mail from mid-September. Enrol or check your enrolment status at www.vote.nz



Happy Birthday

To our special locals celebrating
significant birthdays

Earle Morris 80 - July 6th

Pat Thorpe 90 - July 19th

Des Thomson 80 - August 22

LTRA: Current Committee

Chair: Libby Fletcher libby@ultimatenz.com

Secretary: Martin Wiseman martin.wiseman@dlapiper.com

Treasurer: Richard Noke noke@eol.co.nz

Committee:

Terry Beckett: becketts.tb@gmail.com

Ray Gatland: gatland@xtra.co.nz

Peter Fahey: taraweralandcare@gmail.com

Jane Spear: janespear2011@gmail.com

Karen Walmsley: taraweratrail@inspire.net.nz

Fiona McAllister: fiona@betterwords.co.nz

Rotorua Lakes Community Board Contact:

Chairman: Phill Thomass phill.thomass@rotorualc.nz

Lake Tarawera website: www.laketarawera.org.nz

Phantom Editor: Fiona McAllister Email: fiona@betterwords.co.nz

Useful Numbers



Emergencies: Police/Fire/Ambulance/Coastguard 111

Tarawera Fire Unit: Chief Fire Officer Steve Gatenby 0274 664 161 steve.gatenby@til.co.nz

Station Officer Murray Dillner 021 290 0376 murrayedillner@gmail.com

Rotorua Hospital: 07 348 1199

Lakes Primecare Accident/Urgent Medical: (1165 Tutanekai Street, Rotorua), 07 348 1000

Poisons Urgent Info: 0800 764 766/Non Urgent 03 474 7000

Rural Delivery -Jan & Glen Harmer: 07 349 1254/022 153 6894

Security – George Gilmour 07 362 8378 gilmour06@gmail.com

Rotorua Lakes Council: 07 348 4199

Bay of Plenty Regional Council: 0800 884 880 **AED DEFIBRILLATORS:**

Department of Conservation: 07 349 7400

Fish & Game Eastern Region: 07 357 5501

Vet Services – Barrowman & Goodman (110 Lake Rd, Koutu, Rotorua, 3010) 07 343 9090

We currently have two AED Defibrillators on Spencer Road:

1/ At Fire Unit– 151 Spencer Road

2/ On the front deck of 11 Rangiuuru Bay Road (last house on right of Rangiuuru Bay Reserve)