

THE PHANTOM

Autumn 2021



IN THIS ISSUE:	PAGE NO.
From the Chair	1-3
AGM Chair Report	3-5
AGM Minutes	6-8
A Word from the Editor	
The Community Centre Update	9-10
Sailing-King of the Lake	
Lakes Community Board Update	11-12
Jenny Donne—Bayleys	
Te Wairoa: Ninety Years	13
Pine Pulling	14-16
RLC Long Term Plan	17
Merlin Electrical	
Pest Update	18-19
Norman Donald	
The Great Tarawera Smoke-Off	20-21
Hamills	22
Expandesign	
AED—Fire Unit	
Collab Electrical	
PJ—A Bright Spark!	23-24
DOC Update	25-26
LTRA Committee & Useful Numbers	27

Chair Report: Libby Fletcher

Welcome to the Autumn edition of The Phantom. I hope that you all have had the opportunity to enjoy time at Tarawera over the summer. We certainly had a great deal more people here over the Christmas/New Year period either staying or visiting by the day. We were so fortunate to be free of lockdowns at that time, many of our families and friends overseas were very envious.

AGM

The 51st AGM of the Lake Tarawera Ratepayers' Association was held on Sunday January 17th and was very well attended. We were pleased to welcome Ray Gatland on to the committee. Thank you to everyone who attended.

We have now received the audited accounts for the year ending September 2020, and you can find these on the LTRA website.

(Continued on page 2)

(Continued from page 1)

Sewerage

Every ratepayer at Tarawera should have received the letter from Council regarding the sewerage scheme for Tarawera. Whilst the LTRA is 100% supportive of reticulated sewerage for Tarawera we were very disappointed with the proposed RLC payment terms because:

- ◆ The price has increased markedly
- ◆ The payment on first flush in July 2024 is to be a lump sum
- ◆ The proposed amount is open ended

Since the letter went out the committee has received many emails and phone calls and we are very aware of peoples' concerns, particularly around payment terms. As I said in my annual report, I have had discussions with staff members at RLC regarding the fact that Tarawera will not have the opportunity to pay this off over a period of 25 years through their rates; the answer has come back each time - no. In my opinion this is totally unacceptable as every other lakeside community in the district has had this option. Not only is it unacceptable it is totally inequitable. We continue to work tirelessly on your behalf to seek improvement to these terms with RLC.

The Council's Long-Term Plan was approved on the 25 March, the consultation document will be released on 30 March and public feedback on it will be accepted until April 30 at 4:00 pm. The LTRA will be putting in a submission and we hope that members will either put in their own submission or support our submission. We will be in touch with all our members regarding the submission well before submissions close.

Thank you to everyone who has replied to the Council letter; a number of people have shared their letters to Council and there have been some excellent letters.

Power Pole Replacement

The south section of Spencer Road is now underway and should be completed by September. For those of you in that area I hope that this does not cause to much disruption to your daily life.

Lake Structures

For those of you who own a lake structure that was included in the recent limited notification to the Te Arawa Lakes Trust, Tuhourangi Tribal Authority, Te Mana o Ngati Rangitahi Trust and Ngati Raukawa, you should have received an email from Melanie Jones who is the Regulatory Coordination Team Leader for Bay of Plenty Regional Council.

(Continued on page 3)

(Continued from page 2)

Bay of Plenty Regional Council is currently in discussion with the submitters on mitigation options. Following these discussions BOPRC will be able to share options with applicants before scheduling a hearing, if required.

Should you have any urgent questions, please email Lucy Holden at Lucy.Holden@boprc.govt.nz or call her on 0800 884 881 extension 9278.

Condolences to the family and friends of longtime local, Val Packham who died 11 February, 2021. Val was a former Secretary for the LTRA.

Wherever you are for Easter I hope you have a great long weekend and if you are travelling, travel safely.

Best Wishes

Libby

Chair Report for the Year Ending 30 September 2020

Presented at the 51st Annual General Meeting of the LTRA, 17 January 2021

It is my pleasure to present to you the Chair's report for the year ending 30 September 2020.

What a challenging year it has been with COVID-19. For those of us who were fortunate to be in lockdown at Tarawera it was wonderful to see the amazing community spirit; the thoughtfulness and kindness shown was fantastic. Every day I see reports of what is happening in other parts of the world where many of our family and friends have been badly affected, I am so grateful I live in New Zealand.

Firstly, I would like to thank all the members of the LTRA committee, it is a very dedicated team and their unfailing support is very much appreciated. One member of the committee is standing down this year, Don Stewart; Don has been on the LTRA committee three times, this time since 2016. I would like to thank you Don for your contribution to the LTRA over a very long period.

Lake Tarawera Sewerage Scheme

The Mayor and Deputy Mayor asked at last year's AGM that the meeting be vocal in support of the committee's singular focus on achieving sewerage reticulation for Tarawera.

The community was very definitely vocal in support of reticulation: there were 116 submissions to the Council's Annual Plan. An excellent response thank you.

We as a committee have become increasingly frustrated at the delays and the lack of transparency shown. At a LTRA committee meeting in April, it was resolved that we would engage the services of Kerry Anderson, public law partner at DLA Piper NZ. Kerry was to write to RLC requesting commitment

(Continued on page 4)

(Continued from page 3)

that consultation is completed, expressing concern at lack of progress, requesting confirmation RLC will not agree to a treatment plant at Tarawera, suggesting RLC apply to the Infrastructure Fund and request an undertaking from RLC that as soon as COVID-19 lockdown ends work on the project will begin.

There have been a number of letters to and fro and we felt our members should see these letters, they are on the LTRA website Naturally that all comes at a cost - \$24,000.00, however we have covered these costs with the funds that we have held in reserve for a rainy day – that rainy day came.

During the year I have received numerous calls from members who are very concerned as to how they are going to pay the lump sum for the sewerage scheme. I have had discussions with staff members at RLC regarding the fact that Tarawera will not have the opportunity to pay this off over a period of 25 years through their rates, the answer has come back each time - no. In my opinion this is totally unacceptable as every other lakeside community in the district has had this option. Not only is it unacceptable it is totally inequitable.

Power Pole Replacement

Unfortunately for those of you who requested that we look into the undergrounding of the power, the cost made it impossible. The power poles were replaced from the Buried Village to the beginning of the settlement on Spencer Road prior to Christmas. Work started again in February but was halted by lockdown. All the poles were replaced, and the new lines installed, this was completed by the end of September. I was amazed to see how visible these lines are from the lake.

Cell phone coverage

Again, this year we have had no luck in progressing the cell phone coverage at Tarawera. It would appear that for the teleco companies it is definitely in the too-hard basket. With the increased number of people at Tarawera over the summer period, it is a health and safety risk and we will continue to pursue the options.

Tarawera Landcare

The monthly working bees on Kariri Point have continued during the year apart from lockdown. It is so encouraging to see the numbers of willing volunteers increasing. Bay of Plenty Regional Council have supplied a huge number of trees for planting on the Point for which we are very grateful. We now have the little red Honda 4x4 – “Rhonda” which has made a huge difference to the work that is undertaken, carting mulch to create the track and also a water pump that we purchased last summer to enable us to

(Continued on page 5)

(Continued from page 4)

water all the new plantings. If you haven't walked around the Point please do. Please if you can, join us at a working bee on the second Saturday of every month - it is a great way to meet members of the community

Lake Tarawera Pest Control

The Saturday night of Labour Weekend 2019 we had a great fund- raising event for Pest Control at Black Barn. Thank you to Glenn and Shelly Barbour it was extremely generous of you. I would also like to thank Jo Romanes of the Blue Baths catering for her support for the event. It was a beautiful evening with everyone enjoying the magnificent views. There was a live auction and a silent auction, and we raised more money for Pest Control than we imagined. The money is going towards traps for the foreshore throughout the settlement. It has not been without its challenges with all the compliance details. Hopefully you will see evidence of them very soon. We would also like to thank the Bay of Plenty Regional Council for their support with the rat baiting programme.

The Phantom

A big thank you must go to Fiona McAllister for the excellent work she is doing on the Phantom. Each year we increase the numbers of people receiving it, it is not only members of the LTRA that receive it, it is also sent to the wider community. We continue to get very positive comment from our members and if anyone has stories and old photos that they want to share Fiona would very much like to hear from you.

Civil Defence

We formed a small sub committee for Civil Defence and have been working through the year on this, of course again we were stopped due to COVID. We expect to have the completed Civil Defence document for Lake Tarawera early in the New Year.

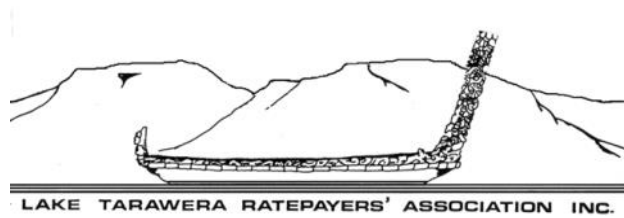
Spring Fair

The Fair was held on the Sunday of Labour Weekend and it was a beautiful day, thank you to the small committee that organises it, as it is a huge undertaking. It is always well attended by the community and the wider Rotorua area. The proceeds from the fair were donated to The Community Hall, The Community Garden and Tarawera Landcare.

I would like to thank everyone in the community who gives so willingly of their time: Fire safety, Pest Control, Security and Tarawera Landcare.

Again, I would like to thank the committee for their unfailing support, it has been a challenging year, you have all been extremely generous with your time.

Minutes of the LTRA 51st AGM: 17 January 2021



Welcome

Libby welcomed distinguished guests: Rotorua Lakes Council Mayor – Steve Chadwick, Deputy Mayor – Dave Donaldson, Bay of Plenty Regional Council Chairman – Doug Leeder, Bay of Plenty Regional Council Cr Lyall Thurston and Chief Executive, Fiona McTavish, Chair of the Lakes Community Board – Phill Thomas and board members Nick Chater and Sandra Goodwin, John Gifford Lakes Water Quality Society, the LTRA Committee and 77 members.

Apologies

Received from Andrea and Merlin Sheffield, Grant Scobie & Veronica Jacobsen, Mike and Annie Allen, Rob Noakes, Garth & Sue Williams, Chris McNaughton, John and Jane Moodie, Juliet Bain, Barry & Pam Tripp, Bay of Plenty Councillors, Cr. Paula Thompson, Cr Te Taru White and Cr Kevin Winters.

Minutes of the 50th AGM

Approval of the minutes, moved, seconded, carried.

Matters Arising from the Minutes

Matters arising from 2020 AGM Minutes not covered in the Agenda: None

Chairman's Report

Refer Pages 3-5 Autumn Phantom

Financial Report

Available on the LTRA Website <https://www.laketarawera.org.nz/page/about>

Don Stewart presented the draft financials subject to audit. These were approved by the meeting.

Election of 2021 Committee

All committee members other than Don Stewart had offered to continue and had been nominated. They were re-elected by the meeting. Don Stewart retired as at the close of the meeting. Ray Gatland had offered to act as a committee member and had been nominated. Ray spoke about his background following which the meeting elected Ray a committee member. The meeting thanked Don for his

(Continued on page 7)

(Continued from page 6)

contribution since 2016 and in his two earlier terms on the committee.

Update on Sewerage Reticulation

Glenn Snelgrove provided a summary of where the scheme is at having been approved by Rotorua Lakes Council as a LPGP system reticulated via the Tarawera Road back to the Wastewater Treatment Plant in Rotorua. Glenn then set out four remaining challenges:

- RLC requires an in-favour response from 70% of ratepayers who respond to its forthcoming letter to all property owners describing the Scheme in detail in order for RLC to proceed
- Cost estimate per connection GST inclusive has grown from \$25,000 to \$33000
- RLC cannot lend the cost over 25 years. However, 3 of the 5 retail banks approached, ANZ, BNZ and Kiwi bank, have said they can support their customers. ASB and Westpac will be chased up by the committee
- RLC will be approached for a larger contribution but to date the answer has been no further contribution is available

Glenn noted that to protect the lake this Scheme must be approved and that residents must respond in favour to the RLC's letter coming soon. To fail to do so would have a huge opportunity lost. The factual of the Scheme should be balanced against a counterfactual of:

- 169 properties will not be able to have a compliant OSET system
- An upgrade of existing septic tanks to an OSET system on properties will cost each property approximately \$28,000.00
- An OSET system is entirely an owner's responsibility

There was general discussion in which Mayor Chadwick, Deputy Mayor Donaldson, Doug Leeder and Phill Thomas, Chair Lakes Community spoke. But the mood of the meeting was that once the RLC letter was received property owners would be able to make a final decision with all the facts to hand.

The committee members and Glenn urged the meeting to think of the lake.

Lake Structures

Libby advised the meeting that details of the process for the bulk resource consent renewal application can be obtained from Sherryn Owen 0800 884 800.

(Continued on page 8)

(Continued from page 7)

General Business

- * Brett Bosley and his family were acknowledged by the meeting. Brett's death is a huge loss to the community.
- * There was discussion on the need to incur the cost of having the LTRA financial statements audited at a cost of about \$4,000 per annum. The sense of the meeting was that it provided peace of mind to members and committee members and aided with funding applications and that audit should continue with the cost being part of carrying on the business of the LTRA.
- * Those concerned about Catfish getting into the lake can contact John Gifford and attend the Lakes Water Quality AGM on -1 February 2021.
- * Troy Baisden from Waikato University provided an update on the lake water model which is about to be completed. He acknowledged the data set that Terry Beckett's sampling over many years has provided. The long-term data set is invaluable to his team. Overall, it is not possible to conclude whether lake water quality taken from the outlet is declining, although arsenic, nitrogen and phosphorous levels all change according to a range of factors and increase from time to time in different parts of the lake. Septic tanks are contributing to phosphorous and nitrogen.
- * The meeting acknowledged the fox terrier-like huge contribution of Libby to LTRA.

The meeting closed at midday.

A Word From The Editor: Fiona McAllister



Happy Easter to you all.

There's rain forecast for the week as I write this but hopefully the sun will be shining over the long weekend. This weather is fantastic for mushrooming —so there is a silver lining! I was getting plenty a few weeks ago on my wanderings around Tarawera and our log-generated oyster mushrooms are having a second flush.

If you missed the AGM in January you can read all about it here; Libby Fletcher's Chair Report and the meeting minutes. As advised, the Financial Report is on the LTRA website on the About page.

Thank you to PJ for allowing me to interview him. I was always fascinated by the story behind the "man behind the New Year's Eve fireworks" and I hope you find his story interesting. He's a humble and generous man, and his fireworks display is an annual treat which I know many look forward to each year.

If you have a story or pictures you would like to share please email me: fiona@betterwords.co.nz



Community Centre Update: Claire Stewart

Lake Kids

We continue to welcome new families to the community and it is so exciting to see so many young children enjoying our community centre and growing up at Lake Tarawera. Cathy Dillner dropped in last month to run music with the children which they loved.

Lake Kids is a casual meet up for lake families on a Friday at the community hall from 9.30 am -12.00 pm. Join the Facebook group to find out

more: www.facebook.com/groups/lakekids/



Items needed

Our resident hall vacuum has bitten the dust. If you have a good second hand vacuum you would like to pass on please get in touch with Claire Stewart on clairemariestewart@gmail.com

Upcoming events

- ♦ Tai Chi Weekly: Mondays 10 am-11.30 am.
Contact Alison Walker if you are interested in coming along on: aire@xtra.co.nz
- ♦ Friday Night Drinks: Every Friday from 5.30pm. All welcome. BYO drinks and nibbles.

Membership Fees

If you're not already a member or if you need to renew your annual membership fees please find the details below. This goes towards the upkeep of the hall and also ensures you get member rates for hall hire and invites to all events.

\$20 Payment by internet banking to:

Account name: Lake Tarawera Community Group

Account number: 03-0415-0068074-000

Reference: Please include your name

If you know someone who is a member who is not receiving our emails please forward this email and ask them to [click this link to subscribe.](#)

(Continued on page 10)

(Continued from page 9)

Hall Hire

Murray Dillner is the contact for hall bookings. Please contact Murray if you would like to book the hall for an event on murrayedillner@gmail.com

Fees for hall rental are:

- Child's birthday party or similar event, half day: \$30 (member) \$50 (non member).
- Council or similar external 'commercial' group—date rate of \$250 or \$200 for not for profit organisations.

Hall hire is a key revenue stream for the centre to ensure we can cover basic costs such as insurance and building warrant of fitness.

If you have any further questions regarding the Lake Tarawera Community Group please contact Claire Stewart on clairemariestewart@gmail.com

Regards

Claire



King of the Lake 4 January 2021: Pat Thorpe

The race was postponed a day because an electrical storm raged across the lake on Sunday 3rd January.

Light winds on the 4th January made for a slow but still challenging race.

- ♦ First place and the winner of the Old Gold Trophy went to Aaron and Susie Torensen in a Laser
- ♦ Brendon and Taran Bates were second with just four minutes between the two boats
- ♦ The Solitaire Trophy was won by Richard Hermans in an Esprit



Thank you to the three safety boats manned by Tony Perks, Damon and Arna Hagaman, and Ray Gatland.

Thank you also to the onshore team with a special mention to Patrice Gatland and her delicious scones.

SAILORS – MARK YOUR CALENDAR NOW FOR

1.00 PM 3 JANUARY, 2022

It is a challenging race for experienced sailors !

Taran Bates receives Second prize from Pat Thorpe

Lakes Community Board Update: Phill Thomass

2021 is a busy year for local government bodies, and it is no different for Rotorua Lakes Council and the Rotorua Lakes Community Board. April sees a plethora of consultation processes being undertaken – we've just finished with Regional Council's Long Term Plan consultation and now Rotorua Council is about to engage on their own Long Term Plan. There's also a Speed Review underway, and we have the Rotorua Public Transport Review Consultation, possibly counterintuitively given its title, being undertaken by Regional Council (as they run our Public Transport services).

We (your Community Board) know the biggest issue facing Tarawera is the proposed sewerage scheme, so we have been working to organise a special meeting for residents and property owners with Council on this topic, as well as the Long Term Plan meetings that will be advertised shortly. In those general meetings we're hoping to have one with a 'Lakes Communities' focus where those of us lucky enough to live around our beautiful lakes can discuss those topics that are of greater relevance to us.

I suspect the most notable part of the Local Roads Speed Review for Phantom readers will be the proposed extension of the current 50kph zone on Tarawera Rd at Lynmore past the current start of the 80kph zone to the new housing development a few corners further up the road, where the new 80kph limit is proposed to start. You can have your say on the council website rotorualakescouncil.nz under 'Current Consultations' – 'Rotorua Speed Review 2021'

I would also encourage you to respond to the Regional Council's Rotorua Public Transport Review (boprc.govt.nz – Rotorua Public Transport Review 2021). Regional Council has overlooked Rotorua's issues for many years and we have an ever decreasing use of buses here. Whether you have a concern around climate change, sustainability or a vibrant Rotorua city, we need to rebuild our public transport network to help address those issues. The suggestions in the review come from Rotorua stakeholders and we need everyone's input to make sure Regional Council implements a fit for purpose bus system here in Rotorua. If we miss this opportunity, it will be many years before we get another chance. This review is also the opportunity for you to ask for a bus service to Tarawera if the community wants one. Already other lakes communities are asking for commuter services so people can get to and from work using public transport rather than private cars.

Meanwhile your Community Board continues to work on a number of issues and projects raised with us by the Tarawera community and your ratepayer group. At our last community meeting at the Tarawera Hall last November, and again at LTRA's AGM, there was a request to investigate ways to slow or calm traffic along Spencer Road. The Board has worked with Council staff and we'll be installing a "Your speed is" electronic sign as a first step in addressing this. We've found these signs to be very effective in getting people to slow down and be more aware of other road users in other areas that have them. The sign is literally on a slow boat from China, but should be here and hopefully installed by the end of April. We are also working with staff to progress the extension of the footpath to Stoney Point, and we are looking for funding for this in the proposed Long Term Plan.

Another project we have underway is the refurbishment of the Stoney Point toilet block which will be co-funded directly by the Board. We're currently working on the design.

Later in the year there will be more consultation for the Electoral Representation Review – every six years Council has to review how council is made up (wards or at large), how many councillors we have,

continued on page 12



ALL OVER LAKE TARAWERA

BAYLEYS
ASSOCIATE REALTY LTD. BAYLEYS LICENSED UNDER THE REA ACT 2018

Jenny Donne - Lake Tarawera Specialist

Having completed 75% of all real estate transactions at Lake Tarawera over the last year, and specialising in the Lakes for over 10 years gives Jenny a market advantage. Jenny's wealth of knowledge, as well as being backed by the Bayleys brand with strong national and international links gives your property a leading edge in today's market.

Thinking of coming to the market this Spring? Call me for a free, no obligation, confidential appraisal.

Jenny Donne Lakes and Residential Sales
 P 07 349 5356 | M 027 385 0566 | E jenny.donne@bayleys.co.nz

ALTOGETHER BETTER Residential / Commercial / Rural / Property Services

(Continued from page 11)

and whether we should discontinue, retain or add to our two Community Boards. The Lakes Community Board was established, against the then Council's wishes in 2006, through the efforts of all our lake communities working together. They did this because under the then system of Wards our concerns were not heard and our lakes issues were not being addressed.

While in our early years our relationship with Council could best be described as troubled, these days Council sees us (and the Rural Board) as important partners helping keeping Council aware of issues outside of the urban area. Both Boards have representatives on the two substantive committees of Council, which means we have input on issues affecting both Rotorua as a whole and our areas (Lakes and Rural) in particular, and have an influence when decisions are made.

An example of our input at this formal level is that the Lakes Board took a resolution to the Strategy, Policy and Finance Committee earlier this year to ask for funding for the investigation of the feasibility to provide reticulated drinking water to our lakeside communities not already reticulated. While not guaranteeing we will see all communities reticulated, this is the necessary first step in doing so. After a presentation and discussion this resolution was recommended to full Council by the committee where it was then passed. Staff are now able to work on this project.

These formal roles we have within council also reinforce and support the many projects we have running in our lakeside communities where we work directly with Council staff and community groups.

When the Electoral Representation Review is put out for consultation later this year I hope you will, and encourage you to, strongly advocate for the retention of the Community Boards.

Phill Thomass

Te Toihau Rāngai Kōroto Moana

Chair Rotorua Lakes Community Board

Te Wairoa: The Buried Village Celebrating 90 Years

Ninety years at Te Wairoa



A walk down Memory lane



Smith Family Legacy

*Thanks for being part of
the journey*



Pine Pulling 2021: Fiona McAllister

This is the 12th year of the Ruawahia Wilding Conifer Project on Ruawahia, more commonly known and referred to as Mt Tarawera. Iwi have a crew of five men employed full time doing wilding pine and wattle control on the mountain and at Te Ariki [the Hot water Beach area], plus a team of volunteers doing the follow-up maintenance mahi [work].

For six years since 2015 (we missed 2016), a group comprised of local Tarawera ratepayers have been one of the volunteer groups helping tame this plague. Here I'd like to acknowledge Debbie Morris, who with her trusty stuffed tiger, Tigger, has been every year; hard working Deb is personally responsible for pulling thousands of the evil weeds.



The mountain most of us refer to simply as 'Tarawera', is actually comprised of three areas: Wahanga (iwi's A1 priority area because culturally she is so significant being an urupa [burial site], a tupuna Maunga [mountain] and the fact that Wahanga and her flanks had the most densely populated wilding areas of the Maunga); Ruawahia and Tarawera.

This year 23 of us met kaumatua Ken Raureti and his nephew Pounamu (affectionately known to us as Handsome), and half a dozen others Ken brought, at the DOC Ash Pit Rd carpark on the morning of Saturday, January 23. The relatively benign conditions down there belied the biting wind and much lower temperature that greeted us when we reached the top carpark on the mountain to begin our trek up to Wahanga. After donning Hi-Viz and more clothes, Ken welcomed us with a karakia and hongis.



In our earlier years, we would pull anything from 15 to 20 thousand seedlings and small wildings in a day, depending on the numbers in our group. Richard Noke personally counted over 3000 wildings and seedlings that he pulled himself one day. While this year I personally probably only pulled around 100, Ken reassured us that we should not be disappointed with the lower numbers of wildings pulled this year. As he said the next day in an email, "Your mahi and coverage on Wahanga yesterday is testament to the success and fruits of the Project. Every single one counts..."



Lee Spear receives a hongis from Pounamu

Continued from page 14

As is his custom, Ken penned us a poem the next day:

Off to the Maunga, here we all go
Tis that time of the year, the time we know.
8.30 Ash Pit, be on time
Off up the Maunga, wilding pine.

Peeps arriving, nice and handy
Someone's missing, where's our Mandy?
"I think she might have gone to the loo"
A couple of others need to go too.

It wasn't long, we filled the bus
& a couple of trucks for the rest of us.
The ole green bus lurches and bump
Unforgiving like Donald Trump.

4WD, a really steep spot
And bugger me days, a grinding stop.
Startle, surprise, there's another bus
A bunch of tourists ahead of us.

We all back up, to have another run
This time "made it, son of a gun."
Next stop Base Camp for poos and pees
Nervous chatter, anxieties.

Then off again to the crater's rim
Mihi, karakia and welcome in.
Introductions and korero, mini "Who's who"
That's our tikanga, it's what we do.

Judges, contractors, all walks of life
Richard's lady Jenny, oh what a wife.
She opens gates, she makes his lunch

Families, friends, mother and son
Whanau together, all as one.
Snippets of Wahanga, we stand at the base
An urupa, mystique, a privileged place.

Korero of the hongis, and the elbow bump
Remembering loved ones, in our throats a lump.
But now it's time to hit the track
Up and over the Razorback.

My health dictates, that I can't go.
So Peter and I, we stay below.
I think he thought, it's peaches and cream
But the area we worked was rocky and mean.

Working away, we cover some ground
In the distance I see the bus turn round.
Next thing we know, the bus is gone
Richard's ute following, he's on song.

He's gone too, I yell out to Pete
Bro let's go, let's hit the beat.
I've every confidence??? Stu will wait.
I'm sure he said that I'm his Mate?

Thank goodness, thank God, the Everest was there
Pete's relief, whew someone cares.

Back down the bottom, the ole campground
Ales and laughter, stories abound.
Thank you Good Friends, your blood, sweat and tears.
From all walks of life, contractors and Spears.

Ken Raureti, January 2021



A Happy Birthday Girl: Lea-Ann Hanson



The Birds!



Richard Noke & Fiona McAllister



Photos: Fiona McAllister


Rotorua Lakes Council (RLC) Long-term Plan

The Long-term Plan is being developed based on Council's key priorities and to reflect what the community has said is important to support a safe, thriving and prosperous Rotorua.

We have
a lot of **hard
mahi** to do.

- **He Papakāinga, He Hāpori Taurikura**
Housing and Thriving Communities
(including investment in the Rotorua Aquatic Centre)
- **Whanake Ōhanga**
Economic Development
- **Whakahaumarū Hāpori**
Community Safety
- **Panonitanga Āhuarangi**
Climate Change
- **Hangaroto**
Infrastructure



 rotorualakescouncil.nz/koreromai

Have
your say!

**ROTORUA
LAKES COUNCIL**
Te Kaunihera o ngā Roto o Rotorua

2021-2031 Consultation

Consultation opens on 31st
March and runs for four weeks

HAVE YOUR SAY!

[https://www.rotorualakescouncil.nz/our-council/
consultation-and-public-notice/haveyoursay/
Pages/default.aspx](https://www.rotorualakescouncil.nz/our-council/consultation-and-public-notice/haveyoursay/Pages/default.aspx)

merlselectrical@gmail.com'."/>

**MERLIN'S
ELECTRICAL LTD**

For Everything Electrical
Phone: 07 362 8572
Email: merlselectrical@gmail.com

Lake Tarawera Pest Control

This last month has been something of a reality check for me. Thinking I have this whole Pest Control thing under control, at least in my patch, until I go outside one night to lock up my chickens and there in the tree about three metres away is a big old rat, going about his rat-like business—I was more than slightly deflated. Put this in perspective: I have nine bait stations and two kill traps on my property but still the evil doer got through my ring of death.

After recovering from that incident I was reading one night and the sensor lights went off outside about 11 pm and there, having wandered across my bridge, was a wallaby munching on the garden plants.

Wallabies are not at all easy to deal with, the best I could do was shoo it away, yes I know 'shooing' isn't in the Manual of Pest Control'

Third leg of the treble came in the form of an infestation of hedgehogs, I have caught five of them in less than a week.

If there is a moral in this I am yet to find it.

Wasps



We have laid the best part of 130 wasp bait stations along Spencer Road and baited them with Vespex, a wasp specific bait. I have rechecked the ones I laid and some are the same as when I left them, others have been tickled and yet others have been cleaned out, one of them three times over. There does not appear to me a direct correlation between wasp activity and the uptake of bait.

I am going to try some other options while there are wasps about and see if there is more obvious success, killing what looks like shed loads of wasps doesn't really dent them too much, the idea is to kill the queens, that is where Vespex comes in, the drones take that back to feed the queen and kill her with the poisoned bait.

Wasps unfortunately are like rats in that we will be fighting a constant battle to keep their numbers in check—there is no magic fix. We do however, now have a solid line of bait stations set up along Spencer Road that can be used next year and expanded if needed.

I would like to thank Andy Goad for sorting out his area north of Wallaby Gully with traps and monitoring feeding patterns as well as thank Keith Fletcher for putting up with my dodgy directions to both locate and find traps plus the LTRA for providing the funding to do all of this.

(Continued on page 19)

*(Continued from page 18)***Rabbits**

I have had a number of people ask me about getting rid of rabbits, like wallabies there are really only two options: poisoning and shooting. I have been shooting rabbits at Kariri Point but stopped while the holidays were on and will resume shortly. On domestic properties PINDONE pellets administered via a feeder are the only safe option, PINDONE acts as an anticoagulant and also handily, is attractive to rats. Over the next month I will set up a trial and see if using baited rather than bullets will make a difference.



Just prior to Fiona distributing the Phantom on Thursday night, she noticed something out of the corner of her eye—this decent sized rat wandering across the floor in front of the TV! She thinks it was sick, perhaps poisoned, as it was less speedy than a healthy rat might be but still got her heart pumping. As I was away she had to bravely tackle it herself. No one had been home all day and it's possible it either came in the cat door or one of the cats brought it in ...

Regards

Ratmeister (& Waspmeister)

Phone: 029 575 0943

Email: rats@eol.co.nz

TRUST YOUR HOLIDAY LET

With the only fully accountable REA licensed agent! Significantly lower management fee
No External website fee, our own fastidious housekeeper and access to the best trades people in town!

2LAKES[®]
HOLIDAY RENTALS

norman@2lakes.co.nz

PH 07 3628 056, 0274 950 189

Licensed Agent REAA 2008

The Great Tarawera Trout Smoke-off: Fiona McAllister

Sponsored this year by the LTRA, the second Great Tarawera Trout Smoke-off was held at the Community Centre on the afternoon of Wednesday 30 December. Again we were blessed with a beautiful day and a great turnout of entrants and local supporters. Around \$500 was raised through entry fees and gold coin donations for the Community Centre.



Special thanks to M.C. Chris Hanson and our conscientious judges: Terry Beckett, Andy Garrick, John Hamill and Ken Raureti who between them sampled around 25 entries in a blind taste test. That's a lot of trout!

This year there were three categories: hot smoked, cold smoked and other, with most entries in the 'other' category. Both organisers and judges were impressed by the creativity and variety in this category with entries ranging from a stunning trout salad with salsa, pates, fish-shaped vol au vents to trout mousse 'ice cream cones'.

Outside on the verandah, Pete Fahey titillated the taste buds of the crowd, offering dainty squares of wasabi mayo spread Vogel's bread topped with his delicious cold-smoked trout.

The winners were:

Hot smoked category

1st: Fleur Ingold and the 'Otumutu Collective'

2nd: Arlo and Oscar Gray

Cold smoked category

1st: Pete Fahey

Other category

1st: Angela McKay for her trout mousse ice cream cones (Angela also won second place last year)

2nd: Wal and Juliet Bain for their magnificent spiced trout salad with fruity salsa

Many thanks also to Hamills Rotorua and Arna and Damon Hagaman for the spot prizes which they donated. We would also like to thank Expandesign in Rotorua for their generous sponsorship of the promotional signage for the past two events.

Post-judging the crowd descended on the trout-laden tables to sample the entries and many continued socialising until quite late. **Mark it in your calendar for 2021: Wednesday 29 December.**



Angela McKay's innovative mousse 'ice cream cones'

Hot smoked judges Terry Beckett & John Hamill



Hot smoked entries



Pete Fahey's winning cold smoked trout



'Other' category judges Ken Raureti & Andy Garrick



LTRA thanks our Trout Smoke-off sponsors Hamills & Expandesign



FISHING & HUNTING SPECIALISTS

**For all your
Fishing & Hunting Needs**

1271 Fenton Street, Rotorua 3010

Ph: 07 348 3147



**Make your brand stand out from the crowd,
with our massive range of quality signage
products. From portable outdoor signs to
custom made building signage.
We make your brand visible.**

100 View Road
Mangakakahi, Rotorua 3015

64 15th Avenue
Tauranga 3012

Phone: 0508 BANNERS

Email: sales@expandesign.co.nz

AED (Heart Defibrillator) Lake Tarawera Fire Station

(Secure external cabinet by
front door)

**Stoney Point Reserve
151 Spencer Road
Lake Tarawera**



**Phone - 111
for cabinet combination
from Ambulance
Communications 24/7**

**COLLAB
ELECTRICAL**
LAKE TARAWERA + ROTORUA + BEYOND

**YOUR LOCAL LAKES
SPARKIE**

With over 10 years experience

WE SPECIALISE IN RESIDENTIAL
AND COMMERCIAL ELECTRICAL

Interested in working with us? Let's collaborate!
Give Jamie McIntosh a call or email

022 173 9048
info@collabelectrical.co.nz

www.collabelectrical.co.nz

PJ (Peter Johnston): Fiona McAllister

Undoubtedly one of the highlights of a Tarawera summer is the spectacular fireworks display residents and visitors are treated to on New Year's Eve. For this we owe a huge thank you to Peter Johnston, better known as PJ, and his wife of some 26 years, Megan Pollock. When not enjoying their lovely lakeside home at Tarawera, they reside in Auckland and between them have two sons and a daughter.

A huge amount of time, planning and money go into enabling this event to take place at midnight every year on 31 December. PJ's love of fireworks was sparked (*pardon the pun*) by his father who was always interested in them. The displays at Tarawera that we enjoy have evolved considerably over the period of about 22 years PJ has been doing them. Improvements in technology, product and his own expertise mean that he has moved from the fireworks all being lit by hand to modern day hi-tech, digitally operated displays using his own electrical cabling. Now it's all wireless and dictated by a detailed 'run sheet'.

Obviously in the wrong hands commercial fireworks could be disastrous and PJ showed me a sheaf of paperwork related to his qualifications (explosives licence, test handler certificate), health and safety and the necessary consents which allow him to purchase, handle and control these exciting incendiaries. Consents include permission from CAA (airspace), NZ Fire Service, WorkSafe, Regional Council and signoff from the BOP Harbour Master. Most of his product comes from China but he also buys New Zealand-made product from a supplier, Dr. Martin van Tiel, in Orini, near Huntly. These days he uses large mortars (similar to what the Army uses) which are capable of having multiple charges loaded in them so you see and hear the firework go up followed by a succession of separate 'booms' as each separately explodes in the sky some 500 feet up.

As we all know, Health and Safety in recent times has become paramount, and now this requires a section of the lakefront to be taped off, security patrolling the foreshore and someone on the water responsible for maintaining a clear 200 metre exclusion zone for watercraft. For everyone's safety and to ensure these displays can continue it is imperative everybody observes the safety tape and keeps well clear on the night. Given the huge effort required by PJ personally to stage these fireworks, he is understandably disappointed that some people persist in entering this exclusion zone, jeopardising their own safety and potentially his ability to stage this event – so please keep yourselves, your children and pets out!

Occasionally he does displays for mates' birthday parties but not commercially; fireworks are a hobby – as he says, there are worse distractions a man could have.

(Continued on page 24)

(Continued from page 23)

Like more than a few self-made men, PJ wasn't a huge fan of school and left at age 15. However his intelligence, drive and ability to spot an opportunity saw him progress from working for a panel beater, to owning his own panel beating business at the precocious age of 21. He went on to sell cars, being a pioneer in the business of used Japanese car imports to NZ in the 1980s (which revolutionised NZ motoring) and subsequently developed a variety of other entrepreneurial interests that have made him the success he undoubtedly has become. He is the founder and Managing Director of GVI (Genuine Vehicle Imports) where he works alongside a large team including his son Hayden.

PJ's first driving experience was on a tractor on the family farm in Matamata when aged about six. He loves cars—especially fast ones—leading to a long association with NZ Motorsport. He is currently the Chairman of Rally New Zealand and was head of the team which helped launch the US career of our own Indy car legend, Scott Dixon. More recently he has been involved with Brendon Hartley and his move from being a multiple Le Mans winner to a Formula 1 driver, but these are just two of the drivers he has generously helped and supported to advance in their sport. This passion stems from his early teenage years when he watched his father compete in the inaugural Rally of New Zealand, where he finished ninth. Rally New Zealand 2020 was scheduled for September 2020 but cancelled due to COVID-19; hopefully it may happen this year.

References:

<https://www.newsroom.co.nz/jim-kayes-pj-johnston-is-a-hard-man-to-stop>

<https://www.gvi.kiwi/>



DOC Update: Leonie Johnsen

Myrtle Rust in the Lake Okataina Scenic Reserve

Unfortunately, during a routine monitoring visit, researchers from SCION confirmed the presence of Myrtle rust on the plant species *Lophomyrtus bullata*/Ramarama in the Rotoiti and Lake Okataina Scenic Reserves. Although this is the first time the fungus has been detected in the Okataina area, the invasive microbe has been spreading rapidly across New Zealand since it was first identified in 2017.

What is it?

Myrtle rust is caused by a fungus that spreads in the air. The disease only affects plants in the Myrtle (Myrtaceae) family which includes pōhutukawa, mānuka, kānuka, rātā, ramarama and feijoas. See <https://www.myrtlerust.org.nz/> for full list of susceptible species. It is now well established across most of the North Island and the top of the South Island. People can inadvertently move fungal spores around, introducing the disease to new hosts and areas where it may not independently arrive.



What to do if you see myrtle rust

- Don't touch
- Don't collect samples as this might spread the disease
- If you can, take a photo of the rust and the plant it's on.
- Report symptoms to the iNaturalist website: www.inaturalist.org/projects/myrtle-rust-reporter or via the iNaturalist app
- If you accidentally come in contact with the affected plant or the rust, bag your clothing and wash your clothes, bags and shoes/boots when you get home.

Your reports of suspected cases are vital in helping determine where myrtle rust is in New Zealand, how far it has spread and whether eradication, containment or even slowing the spread is feasible. The earlier we find out about any New Zealand infection, the greater our chance of doing something about it.

For more information please view the attached flyer and check <https://myrtlerust.org.nz> for advice.

PLAY YOUR PART IN CREATING A PREDATOR-FREE NEW ZEALAND

Become a nature hero and help slow down the impact of introduced predators on our native species. DOC and NMIT have collaborated to produce a workshop to help you learn the knowledge and skills necessary to manage effective pest control programmes in your area.

The Predator Trapping Methods course takes place over two days and has a good balance between classroom theory and a short field component where participants get to handle and set DOC200 and

(Continued on page 26)

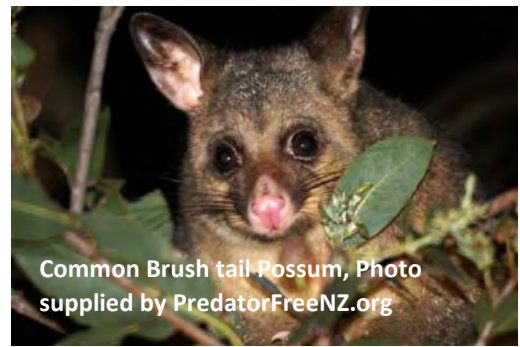
(Continued from page 25)

GoodNature A24 traps. Those participating will gain the practical experience needed to be able to trap successfully.

The next workshop date for the Rotorua introduction to predator trapping workshop is **16 -17 June**.

Join the movement to protect New Zealand's unique environment for generations to come.

Apply now - www.nmit.ac.nz/conservation



Black Billed Gulls (Tarapuka)

The breeding season for the colony on Rotorua's Sulphur Point is now over. The season lasts from early November when the first gulls return to Rotorua, through to end of January when the last gulls leave. The alarming news is that this is the seventh season in a row where no chicks have survived to grow to maturity. The black billed gull is a nationally critically endangered species. For the colony to survive, the gulls do not need to breed successfully every year, however having not bred since 2014 there is great concern for the future of the colony.

The reasons for failing to breed successfully tend to be different each year. This season, the volunteers who monitor the gulls (on a regular roster checking/resetting traps and monitoring cameras) believe the lack of success is due mainly to avian predation by the stronger, larger Black backed gull and Hawk (Kahu) who disrupt the colony and eat the chicks. 166 nests had been counted in early December with 110 eggs in early January, most hatched, but none survived the fledgling stage.

Actions that might help improve monitoring for the next season were discussed.

Start monitoring earlier, perhaps at the end of October so we know when the first gulls arrive.

Organise a site visit with volunteers and DOC staff once the colony is active to discuss all aspects of the bird activity, this will help with the collection of relevant data.

Get a graduate student involved in the monitoring project on a longer-term basis.

Set up nesting pallets for the birds earlier in the season to help the birds get their breeding earlier before the bigger birds start nesting (traditionally later in the season). This may improve success rates.

The Black Billed Gull/Tarapuka project is a volunteer run programme involving regular rostered checking and resetting traps and monitoring at the Tarapuka breeding area in Sulphur Bay, Lake Rotorua. For more information on any of these opportunities please contact Community Ranger Catherine Noble on cnoble@doc.govt.nz

Keep Safe This Easter

Lake Tarawera Ratepayers Assoc. Current Committee

Chair: Libby Fletcher libby@ultimatenz.com

Secretary: Martin Wiseman martin.wiseman@dlapiper.com

Treasurer: Richard Noke noke@eol.co.nz

Committee:

Terry Beckett: becketts.tb@gmail.com **Ray Gatland:** gatland@xtra.co.nz

Peter Fahey: taraweralandcare@gmail.com **Jane Spear:** janespear2011@gmail.com

Karen Walmsley: taraweratrail@inspire.net.nz **Fiona McAllister:** fiona@betterwords.co.nz

Rotorua Lakes Community Board Contact:

Chairman: Phill Thomass phill.thomass@rotorualc.nz

Lake Tarawera website: www.laketarawera.org.nz

Phantom Editor: Fiona McAllister Email: fiona@betterwords.co.nz

Useful Numbers



Emergencies: Police/Fire/Ambulance/Coastguard 111

Tarawera Fire Unit: Chief Fire Officer Steve Gatenby 0274 664 161 steve.gatenby@til.co.nz

Station Officer Murray Dillner 021 290 0376 murrayedillner@gmail.com

Rotorua Hospital: 07 348 1199

Lakes Primecare Accident/Urgent Medical: (1165 Tutanekai Street, Rotorua), 07 348 1000

Poisons Urgent Info: 0800 764 766/Non Urgent 03 474 7000

Rotorua Lakes Council: 07 348 4199

Bay of Plenty Regional Council: 0800 884 880

Department of Conservation: 07 349 7400

Fish & Game Eastern Region: 07 357 5501

Vet Services – Vetora (Cnr of Marguerita St and White St, Rotorua): 07 348 2152 (Ph. 24/7)

Rural Delivery -Jan & Glen Harmer: 07 349 1254/022 153 6894

Security – George Gilmour 07 362 8378 gilmour06@gmail.com