

# THE PHANTOM

Autumn 2022



IN THIS ISSUE:	PAGE NO.
From the Chair	1-3
LTRA AGM Chair Report	4-6
Minutes of 52nd LTRA AGM	7-8
A Word from the Editor	9
Meet a Local—Des Thomson	9-12
The Community Centre Update	13
Socially	14
Collab Elect., Bic yacht for Sale	15
Tarawera Pest Control	16-17
RLC Boatshed Bay Parking	
King of the Lake	18
Jenny Donne Bayleys	
Tarawera sailing Season 2020/21	19-21
Tarawera Tennis	22-23
Merlin Electrical , Boat for Sale, AED	24
Native Tree Focus	25
Tarawera Transfer Station	26
Tarawera Landcare 2115	27-28
Tarawera FM 87.5	29
DOC Update	30-31
BOPRC—Harbourmaster	32-33
Te Arawa Lakes Trust	34
LTRA Committee/Useful Numbers	35

## Chair Report: Libby Fletcher

Hello Everyone,

I hope that everyone has been able to spend time at Tarawera over the summer—what amazing weather we have had. It certainly was a very busy time on the lake, so many people out enjoying the different water sports.

### AGM

The 52<sup>nd</sup> Annual General Meeting of the Lake Tarawera Ratepayers' was held on Sunday January 9th, 2022. The meeting was well attended with invited guests and 75 members. Thank you to everyone who attended the meeting. The final accounts are now on the website and these accounts are with the auditors.

### Update on Sewerage

In early December a joint letter from Rotorua Lakes Council (RLC) and Trility stated that the first phase of the project – design work that will include finding the best location on each property for the LPGP system is now getting underway. Most of these visits have been completed; there are five outstanding. Meanwhile the design work is underway, and it is expected the binding cost will be completed by 21<sup>st</sup> April. This will provide the evidence base information for drafting the Lake Tarawera Sewerage Scheme

(Continued on page 2)

*(Continued from page 1)*

### Repayment Policy.

In early March ratepayers at Tarawera received a letter from RLC, advising that the Funding Working Group has met several times and have discussed further views and considerations on the subject. The outcome of this work has resulted in proposed modifications to the initial repayment options for the net capital costs of the scheme. These will need to be presented to and approved by Council and are: Option for affected ratepayers to pay the net capital contribution by either a voluntary lump sum upon completion of the scheme (target to be in 2024) or through a targeted rate over a period of 10 years. The intention is to report these outcomes to elected members on 12 May via the Strategy Policy and Finance Committee for final confirmation on the 26 May Council Meeting, with payment terms confirmed to ratepayers thereafter. Depending on Council's final decision, a construction contract will then be submitted for Council adoption on 30 June 2022 with a view to starting works as soon as possible in the new financial year 2022/23.

### Maintenance work Completed at Tarawera:

Phill Thomass announced at the AGM the work on the footpath removing the wooden barriers would be undertaken shortly. This work is now completed.

Also, at the AGM it was raised that no footpath maintenance had been undertaken for some time, this has since been completed.

Spencer Road has been resealed from the start of Spencer Road to the beginning of the settlement.

There is no word yet on when the toilet block at Stoney Point will be rebuilt.

### Security Cameras:

One camera has been installed at the Buried Village which captures traffic coming and going along Tarawera Road. Another one will be installed soon which will be able to clearly pick up number plates. The camera at the Fire Station will be installed shortly and the one that is outside Caroline Bosley's property is moving to outside George Gilmour's property. We are awaiting a quote for a further camera on the corner of Ronald Road and Alexander Road. These cameras are being paid for by the LTRA.

### Cell Phone Tower:

I am delighted to report that on Wednesday, 06 April I met with Caitlin Metz from the Rural Connectivity Group and discussed a cell phone tower for Tarawera. This is really exciting news for us—it has been a long time coming. I first talked with Caitlin in 2015 when she was with Vodafone. The cell phone tower will be on private land, and they are awaiting one more signature of approval before a Resource Consent can be applied for.

*(Continued on page 3)*

(Continued from page 2)

My understanding is that cell phone coverage will be available all over the lake, and the properties that are under the hill on the left-hand side of Spencer Road from the start of the settlement. If you have major trees on your property this may block the signal. It is expected that Te Mu Road and the Buried Village will also be covered.

Wherever you are for Easter I hope you have a great long weekend, if you are travelling, keep safe and well.

**Best wishes,**

**Libby**



## LTRA AGM Chair Report: Libby Fletcher

### CHAIR REPORT FOR THE YEAR ENDING 30 SEPTEMBER 2021

It is my pleasure to present to you the Chair's report for the year ending 30 September 2021.

Another challenging year for everyone with the COVID pandemic. For those members who were in lockdown in either Auckland or Hamilton it is great to see you back again and you certainly had my sympathy. For those of us who were in lockdown at Tarawera, it was wonderful to see the amazing community spirit; the thoughtfulness and kindness was very evident. When we see what is happening in other parts of the world, I am grateful I live in New Zealand.

I would like to thank all the members of the LTRA committee, it is a very dedicated and happy team, your unfailing support is very much appreciated. Ray Gatland joined the committee at last year's AGM, and I am delighted to have him on board.,

### Lake Tarawera Sewerage Scheme

On the 26 November 2020, Rotorua Lakes Council passed a resolution agreeing to the proposed Tarawera Wastewater Reticulation as recommended by the Lake Tarawera Sewerage Steering Committee.

In February 2021, all ratepayers at Tarawera received a letter from RLC on the proposed Tarawera Wastewater Reticulation Scheme. In this letter the Council formally advised each affected Tarawera ratepayer of the decision to proceed with reticulation.

Whilst the LTRA committee is 100% supportive of reticulated sewerage for Tarawera we were very

(Continued from page 3)

disappointed with the proposed RLC payment terms because:

- ♦ The price had increased markedly
- ♦ The payment was to be a lump sum on completion
- ♦ The proposed payment was open ended

Our members were very vocal about this, I had many emails and phone calls from people who were extremely distressed about the payment terms.

In April a Tarawera Wastewater Reticulation Scheme – *Let's Get This Moving* meeting was held and very well attended.

The message that was sent to Council was:

- ♦ The Project final design must commence on schedule
- ♦ Funding options for ratepayers must be provided
- ♦ Ongoing joint effort to secure additional project funding

The community certainly made it abundantly clear that they were not happy with the cost of the scheme or the payment terms but were supportive of the scheme. There were over 100 submissions sent to RLC on their Long-Term Plan. To everyone who sent in a submission a big thank you.

On the 28<sup>th</sup> of June, Peter Fahey and I attended the Rotorua Lakes Council meeting for the Long-Term Plan.

There was unanimous support from the Councillors for the design and planning for the Scheme and work is to begin in the 2021/22 financial year.

A committee has been formed for those unable to pay the lump sum and there have been two meetings to find a viable solution, unfortunately COVID has interrupted things. Recommendations will be made to Councillors in late March, early April 2022.

We have been working for a very long time on reticulated sewerage and the committee is very pleased with the progress we have made in the past year. I personally have attended 21 meetings with RLC and BOPRC, and as a committee we have met at least 25 times over the 2020/21 year, all these meetings were related to sewerage.

*(Continued from page 4)*

## Power Pole Replacement

This project has now been completed; I am sure everyone is relieved, it has been disruptive with the power cuts constantly. Hopefully from now on there will be very few power outages.

## Cell phone coverage

Sadly, every year I report that we have had no luck in progressing the cell phone coverage at Tarawera. Clearly the Telco's do not see this as a health and safety risk.

## Tarawera Landcare

The monthly working bees on Kariri Point have continued during the year apart from the odd time we have been rained off. It is so encouraging to see the numbers of willing volunteers increasing. Bay of Plenty Regional Council have continued to support us, supplying us with further trees for Kariri Point and Rangiuru Bay Road and poisons for the old man's beard and the Tradescantia (wandering Willy). Further acacia trees have been removed from Kariri Point. We were absolutely delighted with the gift of well over 500 native trees given to Landcare by Tipu Wai, one of our members is connected to this group. We are grateful to the various operators who give us mulch, this we use around the newly planted trees and the track. We will be expanding the work of Landcare to include Otumutu Lagoon this year.

## Lake Tarawera Pest Control

Thank you to all the volunteers who fill the rat bait stations, the rats have been very hungry over the winter and there was a point when the Ratmeister thought we would run out of bait. That was due to lockdown in Auckland, that was solved, and the good work continued. So many people have commented on the birdlife here; that is a direct result of the rat bait. There has been an increase in the number of stoat sightings at Tarawera and they are wily devils, very difficult to catch. Rabbits continue to be a problem as we cannot lay poison because of dogs, the only way is to shoot them, that can be problematical.

## The Phantom

A big thank you must go to Fiona McAllister for the excellent work she is doing on the Phantom. Each year we increase the numbers of people receiving it, it is not only members of the LTRA that receive it, it is also sent to the wider community. We continue to get very positive comment from our members and

*(Continued from page 5)*

if anyone has stories and old photos that they want to share, Fiona would very much like to hear from you.

## Civil Defence

We continue to work on the Civil Defence Plan but again progress has been stalled by COVID.

## Spring Fair

The Fair was held on the Sunday of Labour Weekend 2020, and it was a great day, thank you to the small committee that organises it as it is a huge undertaking. It is always well attended by the community and the wider Rotorua area. The proceeds from the fair were donated to The Community Hall, The Community Garden, Tarawera Landcare and Owen Dawe for his radio station.

## Tarawera Sailing

Thank you to the dedicated team for the amazing work they are doing. It is great to see the next generation of sailors coming through; it was an absolute joy for me to go down one afternoon and watch them all out on the lake having a great time. Who knows how many Olympic or America's Cup sailors Tarawera can produce?

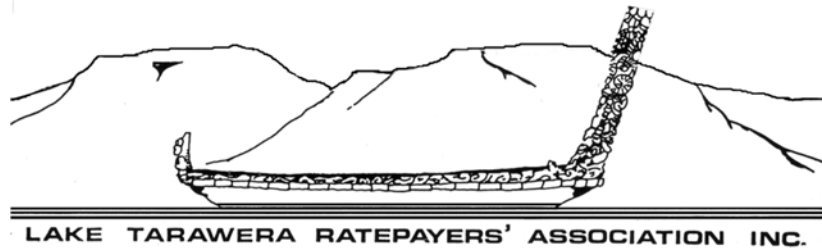
I would like to thank everyone in the community who gives so willingly of their time. Fire Safety, Pest Control, Tarawera Landcare, Spring Fair Committee and Tarawera Sailing

Again, I would like to thank the LTRA committee for their unfailing support, it has been a challenging year, you have all been extremely generous with your time.





# Minutes of the 52nd LTRA AGM: 09 Jan 2022



## LTRA 52nd ANNUAL GENERAL MEETING SUNDAY JANUARY 09 2022

### Welcome:

Libby welcomed distinguished guests: Rotorua Lakes Council Mayor – Steve Chadwick, Deputy Mayor – Dave Donaldson, Bay of Plenty Regional Council Chairman – Doug Leeder, Bay of Plenty Regional Council Cr Lyall Thurston and Cr. Kevin Winters, Chair of the Lakes Community Board – Phill Thomass and board members Nick Chater and Sandra Goodwin, Stavros Michael and Ian Stabler Rotorua Lakes Council the LTRA Committee and 67 members.

### Apologies

Helen Creagh, BOPRC, Andrea & Merlin Sheffield, Murray & Cathy Diller, Rob Noakes, Janet Scott, Elizabeth Little, Karen Walmsley, Monty Harding, Andrew & Pip Beecroft, Claire Stewart, Juliet Bain, Veronica Jacobson, Bruce Begbie and Louise Armstrong.

### Minutes of the 51st AGM

Approval of the minutes, moved, seconded, carried.

### Matters Arising from the Minutes

The accounts will be audited annually. The resolution to pay the chairperson an honorarium was not put to the meeting

### Chairman's Report:

Attached (pages 3-6)

### Financial Report:

This was presented by Richard Noke, who acknowledged the work of Don Stewart. Financial Year (FY) 20/21 draft accounts show a profit of \$6,800. This was the first FY which included the increased levies, which absorbed the deficit for FY19/20. In comparison, in FY 21 audit fees were up, legal fees were down. Libby's out of pocket expenses have been paid.

The draft FY 21 financial statements are attached and on the LTRA website. It was noted that during the year, new accountants Pearce & Co were appointed and BDO will audit the accounts.

### Election of 2022 Committee:

All current members, having consented to act, and been nominated, were reappointed. No election was required there being no other nominees.

**Update on Sewerage Reticulation from Stavros Michael of RLC:**

Community consultation by RLC on reticulation was completed in 2021. 75% of those responding supported reticulation. 30% of those made comment on the cost and the need for flexible funding options. In June 2021, RLC concluded its long-term plan, making provision for the scheme and bringing forward to the years 2022/2024. Funds were allocated for the detailed design process. The funding subcommittee was formed in October 2021. MfE suggested that the \$6.5m allocated for Tarawera reticulation could be applied to Rotoiti/Rotoma who have a funding deficit on the basis that reticulation at Tarawera was proceeding slowly, which is not the case. The wastewater committee of RLC rejected the stance of MfE and is confident that the Minister will support the \$6.5m being applied to Tarawera reticulation.

Presently, the detailed design process is underway, which will enable contractors to produce a fixed and binding price. Officers of Council will recommend to RLC that flexible funding, payable over 10 years, be made available to those ratepayers that require it. Construction will start in the financial year 2022/23.

Mayor Steve Chadwick spoke in support of reticulation and in support of application by MfE of the \$6.5m to Tarawera.

**Guest Speakers:**

**Doug Leeder, Chairman BOPRC:**

Doug acknowledged Libby and the Committee. A decision Three Waters is expected in mid- 2022. Tarawera is in Entity B. Entity B will take on responsibility for the assets and liabilities of reticulation. It is not given that Iwi will make up 50% of the Entity Board, they may make up an advisory council to the Entity Board.

**Kevin Winters, Chair, Operations Committee at BOPRC:**

Kevin commented that there is only one harbour master for the BOP, and that dedicated contractors for Rotorua Lakes cover all lakes, and that they work from 7.00 am to 6.00 pm. A third boat is expected for the Rotorua Lakes District by the end of January. People with issues regarding the behaviour of people on the water should call 0800 5 KNOTS.

**Phill Thomass, Chair, Lakes Community Board:**

Work on the footpaths removing the wooden barriers, which is budgeted for this FY, will be undertaken shortly. Phill noted that footpath maintenance should be undertaken every December and that it will be investigated by RLC. The overloaded toilets at Stony Point will be rebuilt. There was general discussion about the speed of vehicles on Spencer Road, and the state of the footpaths.

**Dave Donaldson, Deputy Mayor RLC:**

Dave acknowledged the work of Libby and the Committee. This was Dave's last LTRA AGM as Councillor

**Terry Beckett, LTRA Committee Member:**

Terry spoke regarding the water quality cash balance in the financial statements. The balance will be used once the Chair in Lake and Freshwater Science has been replaced, the existing Chair having left the University. Terry commented that the lake water temperature is the highest he has ever recorded at this time of year in 50 years. He also noted that currently, lake water clarity is poor, at around 5m as opposed to the usual 8-9 metres.

**General Business:**

Libby thanked Peter Johnson for the annual New Year's Eve fireworks display.

New security cameras at the Buried Village will be installed later this month and a camera at the Fire Station later.

The meeting closed at 11.45 am.



## A Word From the Editor: Fiona McAllister



It's been a gorgeous summer but autumn has its own charms, so happy Easter to you all and I hope you enjoy this Autumn Phantom. The remnants of cyclone Fili will hopefully have disappeared by the time the long weekend hits so get out and enjoy our lovely piece of paradise. If you haven't checked out Kariri Point or the newly cleared walkway from Otumutu Lagoon boatsheds to Te Karamea Bay, why not get out and work off some of those hot cross buns and chocolate. Look for trout cruising the stream in the reserve at Otumutu. This area will be planted with natives once we get the blackberry under control.

Thanks to everyone who contributed to the Phantom and if you have a story or pictures to share please get in touch. The Winter edition will out sometime in July.

Have a great weekend.

Regards

[fiona@betterwords.co.nz](mailto:fiona@betterwords.co.nz)

## Meet a Local ~ Des Thomson: Fiona McAllister

You may have spotted this two-time Olympian in your midst and not even known it—that lean streak — giving it death racing down Spencer Road above Boatshed Bay on his trusty road bike. I'm always in awe at how fast and fearless he is, but years on a bike have given him a level of fitness and confidence most of us could only dream of.

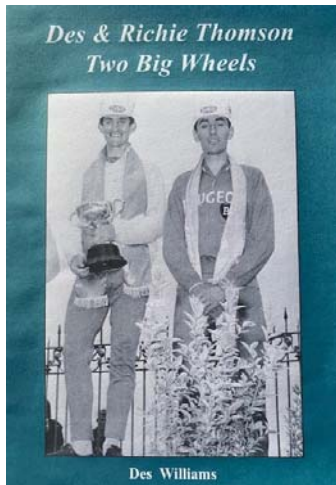
Born in Oamaru, his parents moved the family to the Kapiti Coast when he was about two and his father was on Home Defence duty at McKay's Crossing. The family resided at Raumati South for the next 40-50 years. Des has spent a lot of his adult life in Australia (53 years on the Gold Coast) but whenever he returned, he always went home to see his parents, who were still there till about 20 years ago. His three brothers are now also deceased, a sister survives and lives in British Columbia, Canada and prior to COVID, visited often. Richie, his older brother who died about a decade ago in Rotorua was, like Des, an Olympic cyclist.

Their playground was Queen Elizabeth Park where the army was based and they would wander the sand hills looking for treasure – anything from birds' nests to unexploded munitions. Des feels these activities and later possum trapping, gave them good stamina. Their father encouraged them as he worked as a builder, and a dose of polio had affected him; money was tight so he turned a blind eye to the purloined fruit and veges his sons sometimes returned home with, from their sojourns around the district.

Early sports were athletics and rugby. One day at an athletics meeting, the boys got chatting to Roy Dutton who Richie delivered the paper to. Roy was on the New Zealand Olympic Committee and having been a cyclist, encouraged Richie to try it. Des recalls back then Paraparaumu, Shannon, Otaki, Waikanae and Levin all had their own athletics meetings followed by a cycling event.

(Continued from page 9)

Around this time, unimpressed with the new local high school, Des' parents decided to send him and Richie to boarding school at Dannevirke High School. He hated the journeys on the old Newman's bus.



Older brother Richie was a bit of a rebel and decided they weren't going to do the military training. The brothers had 'smuggled' a bike to school and as there were local athletics/cycling meets in the area, the choice was obvious. One day a teacher heard the race results being broadcast over the loudspeaker, carried on a westerly wind. Why was Richie Thomson's name being announced when he was supposed to be at military training..? Cycling was not considered much of a sport at Dannevirke High School but Des is proud to be the first Olympian to come out of the school (1964: Tokyo).

But how did they transition from local meets and 'chasing sheep trucks' to going to the Olympics? Des says Richie headed to Auckland seeking better competition while he remained in Raumati, competing against the best local riders and learning the discipline of solo training. Unlike today where sponsorship means being a professional cyclist is viable, back then income for an amateur was essential. Immediately out of school, Des worked as an apprentice boat builder in Paraparaumu, a job his mother had arranged. The dirty environment didn't spin his wheels (*sorry terrible pun*) and after seven years he left. Working for Johnny Simpson an All Black, cleaning up the public bar in the Paraparaumu pub, after the "six o'clock swill" wasn't a savoury job but it paid well for two hours work. Taxi driving for four hours beforehand and with the support of his parents, Des made enough to live on which enabled him to train for five or six hours during the day.



Des wearing the yellow jersey on the final day of the Dulux Six Day Tour

Competition with older brother Richie was a driver in his training. "If Richie rang and said he'd ridden 100 km in training that day in Auckland, I'd go out and ride 110 km the next day—but I wouldn't tell anyone." Amateurism was strictly regulated. If a race prize was a set of silver teaspoons, riders would go and have them engraved so they became 'a trophy'. By the time Des was at the Olympics regulations had loosened to allow a private sponsor. In a lift at one of the Games wearing his sponsor's jersey emblazoned with "Queen Anne Whisky", an Australian official, told him, "You won't be wearing that much longer". In reality, Des says, professionalism was actually heading the other way.

Richie did not make the 1964 Olympic team, though Des says he should have. "Richie was our second best rider; we sent five, but Richie preferred to stay in Europe – he was ahead of his time." Twenty-one year old Des did make the team. Japan was a different country then, not long post-war, the people seemed downtrodden but very welcoming. The 1200 cyclists from around the world stayed at an American airbase, separate from the main athletes' village and wearing their tracksuits, they could hitchhike anywhere. People went out of their way to be friendly. The team did well with the first two riders finishing in 12<sup>th</sup> and 18<sup>th</sup> in the road race (he thinks, New Zealand's first entry in the event); Des cramped badly after a steep hill and finished 61<sup>st</sup>. He said the team finished about 11<sup>th</sup> (the first three

*(Continued from page 10)*

riders' results determining their position) but with a sprint to the finish there wasn't much in it. The Kiwis arrived about two weeks before the race while the Europeans arrived a week before, fresh off a tour; their competitive seven-day racing was superior prep to regular training.

Before the 1968 Olympics, Des and the team competed at the Commonwealth Games in Jamaica in 1966. Even then it was a notoriously dangerous place for outsiders. The team were instructed to be careful and not stray off main roads. At one point the team hired a large American car so management could accompany them in case of trouble. It broke down half way into the training ride along the course which was 60 miles out and back into nowheresville – with pigs and kids running across roads. While they tried to fix the car a couple of guys came along and asked if they could take the bikes for a ride. Half an hour later, although they were somewhat distracted as the team and locals played cricket in the main street, watched on by other bemused locals from the surrounding balconies, Des and his mate were getting anxious as there was no sign of the men or their bikes. Eventually the budding Jamaican cyclists returned and the team carried on.

The actual race was challenging as it rained, making the marble chip surface very slippery and there was a major crash on the first corner. Des just avoided it but his brother Richie and fellow Kiwi, Dutch-born Tino Tabak from Christchurch, fell hard. Finding himself with team mate Laurie Byers in the lead group of 15 at the turn, Des felt confident. More crashes ensued and Des was not spared on the slick surface; the English sprinter going right over the top of him as he fell too. Dusting himself off, a discombobulated Des jumped back on his bike and gave chase. Meanwhile a rider from Isle of Man had secured a three minute lead so the gold was all but decided. Chasing for about 10 km, Des eventually reconnected with the bunch, jubilantly finishing second with team mate Laurie Byers collecting the bronze (repeating his 1964 Perth CWG result).

After that success Des was invited to join the International All Stars team for the 14 day Tour of Britain, the biggest amateur race at the time, riding 160 km a day. In 1967 he also had a six month stint living in the Netherlands and achieved his highest world ranking of 46 with Richie at 47.

Both brothers were in the New Zealand team in 1968 to Mexico City and Richie was Captain. The townspeople of Raumati raised enough money to send the siblings' father too. Mum stayed home as by then she was running a successful women's fashion business. From the 1930s our Olympians have been numbered; Des is about 202; Richie was 232. Richie finished 52<sup>nd</sup> at Mexico, the only New Zealander to complete the demanding hilly course after three of the team punctured.

1968 was also the year he married Jenny who he knew from Raumati. They moved to the Gold Coast where her dad lived and they ran a family-owned motel for eighteen months. Then Des opened five different bike shops, initially specialising in racing bikes. He represented Queensland at the Australian championships in Hobart in 1969, winning the road race by three minutes.

Sport and drugs have a long association and when Des rode, an early stimulant of choice was Ritalin, now used to treat ADHD. Des suspects some of his peers died prematurely as a result of their drug use which may have strained their hearts. The opportunities offered by professionalism also saw drug use become more common and Des said it was well known in the large Australian cities doping occurred. He's grateful he finished his career as an amateur but concedes the pressure of being in a professional team could have easily led to being forced to 'conform' to secure results and retention.

Jenny and Des amicably parted company many years ago but whenever he's in Australia he enjoys spending time with longtime German love, Monica, who still plays tennis. Des first came to Tarawera in 1976 to stay at his Uncle Malcolm's bach which was at the start of Spencer Road. On a more recent visit here about 25 years ago with Monica, he spotted his house and bought it but still spends a lot of time on the Gold Coast.

Nathan, Jenny and Des' only child, is 49 and a music tutor at the Sibelius Music Academy in Helsinki,



(Continued from page 11)

Finland, where he lives with his wife Katya who works with refugee children. Des proudly informed me that the couple both completed their Doctorates in Music last year. Finland's proximity to Russia is a concern with the invasion of Ukraine. They have three sons who visited Tarawera about four years ago around New Year. The boys are bilingual but their English has a distinctive Kiwi accent. One of the boys, Kai, hopes to be an artist and was one of 20 children from Europe to have his art work published in a book by J.K. Rowling.

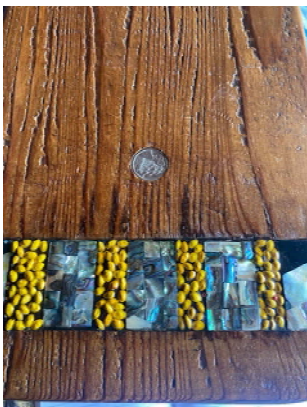
When he's not in Australia, Des never tires of the beautiful, tranquil view from his Tarawera home which is full of mementos, trophies and wood carvings – most made from driftwood lovingly collected by his father over many years. This August Des will celebrate a significant birthday — and it's not 70.... Don't be surprised if you see him out celebrating with another ride because he still rides about 40 km several times a week—unless he's on the golf course.



In the picture left, Des is wearing what he considers "the most important jersey that I've ever had; I'm the only one in Australasia with this jersey".

Laurie "Truck" Sams is the brother of a friend I used to ride with. An amputee and former SAS soldier who suffers from Post-Traumatic Stress Disorder (PTSD), he's just completed a 10,000 km ride through eight countries on two continents, raising awareness and support for other veterans and first responders suffering from PTSD.

[thelongridehome.org/](http://thelongridehome.org/)



## Community Centre Update: Claire Stewart

### Regular events

- ♦ Tai Chi Weekly: Mondays 9.00 am -10.30 am.  
Contact Alison Walker if you are interested in coming along on: [aire@xtra.co.nz](mailto:aire@xtra.co.nz)
- ♦ Friday Night Drinks: Every Friday from 5.30pm. All welcome. BYO drinks and nibbles.

### Working Bees on the hall buildings and grounds

Held the first Sunday of every month at 10.00 am. #



### Lake Kids

Young families still meet casually at the community hall approximately every second Friday of the month. We still enjoy meeting and welcoming new families into the area and we recently had a special Lake Kids catch up on a weekend so all family members could come. We will plan another of these soon. If you are interested in learning more join the Lake Kids group on Facebook.



### Membership Fees

If you're not already a member or if you need to renew your annual membership fees please find the details below. This goes towards the upkeep of the hall and also ensures you get member rates for hall hire and invites to all events.

***\$20 Payment by internet banking to:***

***Account name: Lake Tarawera Community Group***

***Account number: 03-0415-0068074-000***

***Reference: Please include your name***

If you know someone who is a member who is not receiving our emails please forward this email and ask them to [click this link to subscribe](#).

If you have any further questions regarding the Lake Tarawera Community Group please contact Claire Stewart on [clairemariestewart@gmail.com](mailto:clairemariestewart@gmail.com)

***Regards***

***Claire Stewart***



## Socially: Arna Hagaman

### Friday Night Drinks



On Friday night at the Community Hall we had a support for Ukraine night at the hall and had a blue and yellow theme.

It was a fun night with a great turn out.

Every Friday after 5.30 pm we get together for a social get together.

It's a great time to meet new friends and catch up with ones that you already know.

Please bring what ever you want to drink, your own glass and a plate of nibbles. Sign in on arrival.



### Get Fit-Have Fun

#### Stretch—Dance—Circuit

This is a fun one hour exercise class so come along and work to your own level and stay active. We begin and end with stretching, there are various stations for circuit training and some fun dancing in between.

#### You need:

- ◆ Gym shoes
- ◆ Comfortable workout clothes
- ◆ Towel
- ◆ Drink bottle
- ◆ Yoga mat if you have one
- ◆ Gold coin donation for the hall
- ◆

**Numbers are limited so please message Arna to book your spot and check the time and day**

**027 328 7769 or on Facebook**

### Tarawera FM 87.5

Did you know Tarawera has its very own radio station 87.5 FM? (see page 27 for more details). Owen Dawe has set this up and at this stage main coverage is the lagoon end of the lake.

We are fundraising to add another repeater station down the other end of the lake.

If you would like to make a donation please contact Owen - **Ph 07 362 8297**

Owens Email is [tarawerafm@gmail.com](mailto:tarawerafm@gmail.com)

So far we have raised \$300. Each repeater station is around \$1000.

He would also like to raise funds for solar power for emergencies so we can have communication throughout our community.





**COLLAB  
ELECTRICAL**

LAKE TARAWERA + ROTORUA + BEYOND

**YOUR LOCAL LAKES  
SPARKIE**

With over 10 years experience

WE SPECIALISE IN RESIDENTIAL  
AND COMMERCIAL ELECTRICAL

Interested in working with us? Let's collaborate!  
Give Jamie McIntosh a call or email

022 173 9048  
info@collabelectrical.co.nz

www.collabelectrical.co.nz

## FOR SALE: 2.75M BIC OPEN YACHT

EXCELLENT CONDITION



Includes beach trolley, one sail, all rigging, spars with bag, rudder and center board. All set to go sailing. Has had little use and mostly in freshwater. Always garaged. These boats are made of plastic and therefore are very robust. They are fast and easy to right. Very popular and exciting one design for young sailors. \$2,900.00 ono. Phone 021 569 076.

## FOUND

On Wednesday 12 January, two life jackets were found at Stoney Point boat ramp by a member of the public who handed them to a Fire Unit member.

If you think these may be yours, please ring Dave 07 362 8489 or Susan 07 362 8228.



## WANTED

Empty 15 litre water bottles for protecting new native plants from rabbits at Kariri Point and Rangioru Bay



Please drop off to 214 Spencer Road,  
Lake Tarawera

# Lake Tarawera Pest Control

I am going to talk about two things here—**Rat Bait and Wasps**

## 1/ Rat Bait

Without doubt our rat baiting efforts are successful—but we have a big problem with people not following the system.

- We are very lucky to be allocated money (\$6,000 ) by BOPRC for purchase of bait, this however only covers about 2/3 of the cost. (We use about 1 tonne of bait a year)
- To cover the shortfall we rely on donations, selling bait, LTRA funding, and using our contingency money.

**The system we use is simple:**

- Each bucket has a number
- Write down who you are and the number of bait bucket you have taken
- Also, where approximately, you are using the bait
- Report back to me on usage

**So what is the problem ?**

- People taking bait and not recording any information or meaningless information
- People taking multiple buckets of bait at one time
- People not returning information on usage

In response to this I have not replenished baits at either the Community Centre or the Buried Village.

**If you want bait, contact me and I will issue it from my store.**

This is not just a matter of poking more money at the issue, we also need to be all working to the same end.

The LTRA has been helpful in allowing us to use their shared services and support systems.

## 2/ Wasps

I thought we were all over the wasps, given them a hiding last year and now cruising to victory on the back of low summer numbers.

How wrong I was; in the last month the populations have exploded, I have personally dealt to 21 nests compared with 12 same time last year. We have done two rounds of the wasp-specific bait VESPEX and it has made a difference but the wasps keep coming.

There is not much more we can do other than target the nests and continue using Vespex, some people are using sugar bait traps and this definitely works but they don't knock down the nest which can have 3 to 5,000 wasps in it.

If you find a nest please contact me and I will exterminate it, unfortunately they are often hard to locate or you find them by chance.

(Continued from page 16)

**This wasp nest recently found (and destroyed),  
at Otumutu Lagoon, was inside a ponga. It was  
the size of a watermelon!**

Regards and Happy Easter

***The Ratmeister (& Waspmeister)***

**Phone: 029 575 0943**

**Email: [rats@eol.co.nz](mailto:rats@eol.co.nz)**



## Rotorua Lakes Council-Boatshed Bay



The Kariri Point/Boatshed Bay Reserve is a reserve well utilised as a lake access point for holidaymakers and locals heading out onto Lake Tarawera.

Last summer the reserve was inundated with an unprecedented number of people accessing the lake and parking boat trailers and vehicles. The shortage of space and designated parking sites fundamentally compromised the experience for users.

This summer 2022/23 we are hoping to improve the experience with the removal of any unauthorised items from the reserve which will free up space for designated seasonal overflow parking. Removal of boats on trailers and trailers will enable an estimated further 25 parking sites.

We will apply a phased approach by using a temporary parking facility this summer as part of ground truthing (sic) the pressure on this location ahead of any possible future permanent parking design.

**We are seeking the removal of boats and boat trailers from the reserve by the end of June** in anticipation of utilising the remaining months prior to the summer to establish the temporary parking facility.

Other storage options may be available locally at your cost. If you have any questions relating to these reserve improvements or storage options, please contact Ange Paget [Angela.Paget@rotorualc.nz](mailto:Angela.Paget@rotorualc.nz)



# Tarawera Sailing: Pat Thorpe

## King of the Lake Results

On 3 Jan 2022, eight boats contested for the Old Gold trophy. With almost no wind it was a slow start to the race which was shortened to a buoy off Stoney Point and back to Te Karamea Bay.

Congratulations to Aaron and Suzie Torenson who took line honours in just over two and a half hours on the water!

This was their second win in two years, so what a challenge it will be to race against them next year.

Ray Gatland came in second just two minutes behind the winner.

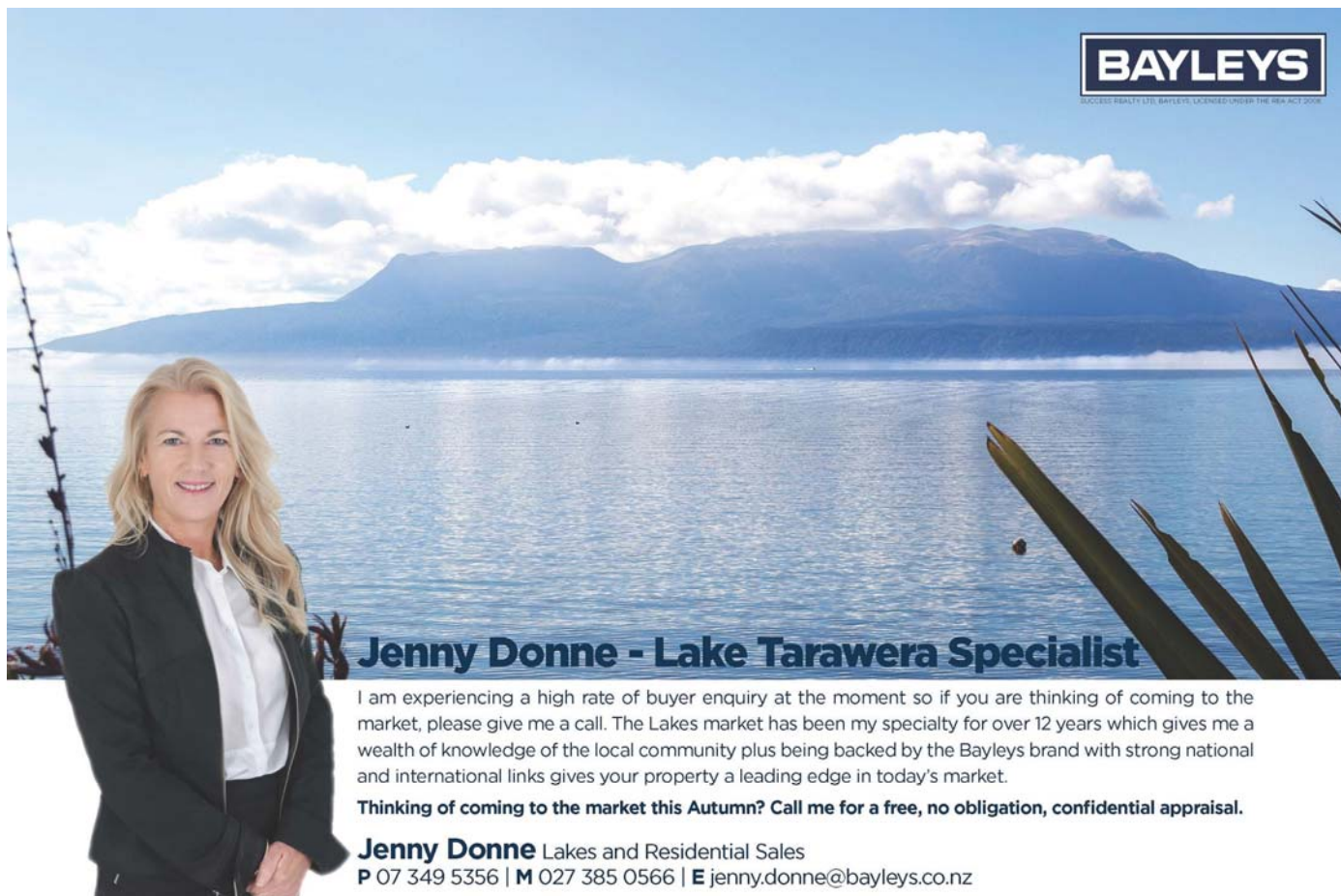
Because no multi-hull boats finished, the Solitaire Trophy went to the second boat home sailed by Ray Gatland. Congratulations Ray.

Thank you to the onshore team with Carol Gilchrist on radio contact with the safety boats.

Jasper (Ian Thorpe's grandson) presented the prizes, and his fiancée Jody helped with registration and racing details.

Thank you to Paul Humphries who very kindly donated his Lucky prize money to the Lake Tarawera Sailing Trust.

*Let us hope for more wind next year. It is an exciting race for experienced sailors.*



**BAYLEYS**  
EXCLUSIVE REALTY LTD. BAYLEYS IS LICENSED UNDER THE REA ACT 2008

**Jenny Donne - Lake Tarawera Specialist**

I am experiencing a high rate of buyer enquiry at the moment so if you are thinking of coming to the market, please give me a call. The Lakes market has been my specialty for over 12 years which gives me a wealth of knowledge of the local community plus being backed by the Bayleys brand with strong national and international links gives your property a leading edge in today's market.

**Thinking of coming to the market this Autumn? Call me for a free, no obligation, confidential appraisal.**

**Jenny Donne** Lakes and Residential Sales  
P 07 349 5356 | M 027 385 0566 | E [jenny.donne@bayleys.co.nz](mailto:jenny.donne@bayleys.co.nz)

## Tarawera Sailing 2020-21 Season: Patrice & Ray Gatland

Under the leadership of Carol Gilchrist, Dave Townsend, Pat Thorpe and Ray Gatland, Tarawera Sailing has had another very successful sailing season. Despite Covid-19 Passes being required for attendance at the club, numbers have grown with twenty junior sailors and six adult sailors all enjoying the challenges and fun in learning to sail.

Parents and grandparents have taken an active role in the sailing programme, whether it is involvement in the teaching, being on the safety boat, or monitoring the skills acquired by the sailors (rigging their boats using the correct knots, being able to swim in a sailing vest, being able to right an upturned boat, being able to go about and gybe while under sail and understanding race strategies).

The season is from November to April and sailing is from Sunday 2.00 pm to 4.00 pm at the Cliff Road Reserve.

### History

In 1999 a Lake Tarawera working group led by Ian Thorpe set up a sailing scheme to encourage all families to enjoy sailing on Lake Tarawera under the guidelines for water safety.

A training programme was adapted from the NZ Yachting Federation to suit lake conditions, and all sailors now receive a certificate of achievement at the end of each sailing season.

A storage shed was built in 2004 at the Cliff Rd reserve and since then the fleet has grown, with most boats being donated by local enthusiasts.

Our income is derived from charities, private donations and fundraising at the annual Spring Fair. Money is used for maintenance, new equipment, rental and insurance.

Membership is FREE and open to children and adults who want to learn to sail.

### Donations

The \$1200 donated by power company Mercury at the end of last season was used to purchase sailing vests and these have been a great success. They are highly visible, very comfortable to wear and help to ensure our young sailors are safe on the water.

Jenny Donne, from Bayleys Real Estate, has generously donated \$500 to put towards another much needed safety boat and has also had twenty screen printed T-shirts depicting the Tarawera Sailing logo for the young sailors. They look fabulous.

A very big thank you to these wonderful sponsors.

The Goodman family have donated a laser that they have had at the lake for many years. She has now joined the Lake Tarawera fleet and was raced in the King of the Lake in January, under her new name Katie, where she came in second overall.

(Continued from page 19)

Unfortunately, with the cancellation of the Spring Fair due to Covid-19 we were unable to raise more funds for another much needed safety boat out on the water. Hopefully in 2022 the Spring Fair will be able to be held again.

### Regatta results 10 April 2022

The end of season regatta is the highlight of the year. There is a lot of fun racing including a pirate relay, a lotto challenge, and the championship races. These are followed by prize giving and a sausage sizzle.

Prizes were presented to the sailors by Libby Fletcher, our Lake Tarawera Ratepayers' Association chairperson.

#### Championship Race:

- ♦ JUNIOR            1<sup>st</sup> Seby Bollard            2<sup>nd</sup> Daniel Alexander
- ♦ INTERMEDIATE 1<sup>st</sup> Elsie Papps            2<sup>nd</sup> Coco Stevens
- ♦ ADULT            Ray Gatland

#### Season Most Improved:

- ♦ JUNIOR            Elsie Papps
- ♦ INTERMEDIATE Yasmine Skevington and Seby Bollard
- ♦ ADULT            Erin Schulte

#### Knotting Expert:

- ♦ Nastassja Stevens

#### Top Sailors:

- ♦ JUNIOR            Daniel Alexander
- ♦ INTERMEDIATE Coco Stevens and Connor Scott

It was a very successful fun-filled Regatta Day with many parents, grandparents and friends attending. After the prize giving, the dedication of a handmade macrocarpa bench seat by Ian Thorpe's son Rick and grandson Zak was made by the Thorpe family. It is in memory of the foresight and commitment of Ian Thorpe's wish that all families at Lake Tarawera could have the opportunity to learn to sail and be safe in the water. Tarawera remembers Ian Thorpe.







## Tarawera Tennis: Mike Woods

### Tarawera Tennis and Yacht Club Tennis Court, Rangiuru Bay

The court is basically a clay court (Rotomahana Clay over native pumice with some admixing). It was formed when the reserve was cleared, by local effort and using Don Winstone's bulldozer. The assets were contributed by locals who became members of a club formed at the time. It is on public reserve land, and part of the Council covenant for its presence at the time was that it was to be available for public use when not in use by club members. It has been several years since our previous Secretary/Treasurer Kay Noakes passed away. Rob Noakes has been filling a caretaker role since then.

It has been approximately 15 years since the court was resurfaced with new Rotomahana clay imported and rotary hoed with the existing material and the surface compacted with appropriate fall for drainage. At that time, the court netting was replaced, new lines laid and also a new net purchased. This was done by special levy at the time on all current members. Subsequently an overhead sprinkler system was installed with its own pump in the "chalet" (circa 2015), to reduce loss of the light clay surface material to wind. Along with annual and daily maintenance by volunteers from the club, the court has stood up to the years and generally plays well. A new net was purchased two summers ago. At this time the drainage fall is less than ideal after gradual loss of surface material. The lines are beginning to break up.

There has been a "changing of the guard" within households of the previous committee members, as well as within the local community making up the membership. There is no longer an accurate membership database. There are societal changes at Tarawera with more

local Rotorua day visitors and out of town "weekenders", many of whom rent casually through an agency online, and who have no relationship to the owner, or to the local community. Many of these short term rentals come with an information/promotional package that indicates that there is a tennis court available in Rangiuru Bay. Non members and casual users





(Continued from page 22)

generally don't contribute to any maintenance and upkeep, and often abuse the court surface by not wearing shoes and/or using it for general playing of cricket/rugby/soccer/BMX etc, including when it is wet or flooded. The current "Court Usage Rules" are not generally available to members or their invitees, except for the signage painted on the doors of the adjacent boat shed (which belonged to Winstones), and haven't been reviewed or reset for some time.

Rob Noakes has indicated that he does not wish to continue to fill the role of Caretaker/Treasurer. Membership has to be re-established and a committee selected from the membership. It would be timely to reset the Club Constitution, Rules and Fees, and agree on an annual maintenance plan, or even consider whether the surface is still appropriate or should be made into a permanent surface. The public/member usage is managed currently by a "member-only" booking system with chalk board on the wall of the Winstone boatshed. This may no longer be the most appropriate methodology and would also need to be reviewed by the membership or their committee representatives. Rob Noakes and Mike Woods (125 and 127 Spencer Road) are the only members of the most recent committee.

We are using the Phantom as a vehicle to first re-establish potential membership, and will initiate the process to form a committee to take care of the facilities that we have available to us into the future.

**Please respond by email by 1 June indicating your desire to be a member and/or committee member of the Lake Tarawera Tennis Club by contacting Mike Woods:**

**Email: [jayne\\_mike@hotmail.com](mailto:jayne_mike@hotmail.com) Mobile: 0272 888 987**

Please include:

- ◆ Your Tarawera street address
- ◆ Phone numbers
- ◆ Email address
- ◆ And whether your property is available for casual rental

## FOR SALE



### Wakarua

Been on Tarawera since new.

Full details available on TradeMe

Reference # 3520782632

Ian Lipscombe

07 3628155

027 2814797



**Merlin Sheffield**  
*Registered Electrician, Rotorua*

P (07) 362 8572  
E merlselectrical@gmail.com



**AED 1** (Heart Defibrillator)  
Lake Tarawera Fire Station  
(Secure external cabinet by front door)

**Stoney Point Reserve**  
**151 Spencer Road**  
**Lake Tarawera**

Phone - 111

**(Does not require phone reception)**

for cabinet combination  
from Ambulance  
Communications 24/7



**AED 2** (Heart Defibrillator) -  
**(No phone needed)**

**11 Rangiuru Bay Road,**  
**Lake Tarawera**

This is the farthest house on the right of  
Rangiuru Bay as you look out to the lake  
Access across Rangiuru Bay Reserve or  
down Rangiuru Bay Road



**Private Property—Please Respect**



# Native Tree Focus: Rachel Howells

## Karamu (*Coprosma robusta*)

Karamu is the unsung hero of regenerating native bush. It is a first coloniser, seedlings grow easily and flourish in semi open/open ground, they grow quickly and then provide the all important shade cover for more sensitive native seedlings and plants.

The karamu also produces an abundance of small orange berries in March/April which the tuis, bellbirds and kereru love. Interestingly the berries are actually edible for us!

It may not be the prettiest of shrubs, it can seem to be leggy and randomly shaped, but it's a key part of the native bush regeneration process.

So next time you think, "Oh, it's only a *Coprosma* \karamu, I'll tidy that up and get rid of it"—think again, because without it, bush regeneration is so much harder and you would be depriving our favourite birds of a great food source.



## Rachel Howells

*(Spencer Road local and passionate weedbuster)*



Rachel dealing to honeysuckle at the Landcare working bee at Otumutu Lagoon March 12, 2022



# The Tarawera transfer station

Using the local transfer station correctly helps to lower the cost to maintain the facility, and maximise the amount of waste that can be recycled.



## Disposing of household rubbish

Household rubbish goes into the red lid bins, in red plastic Council bags only.

To get more red bags, visit the transfer station during manned hours or call ☎ 07 348 4199 for more options.

## Household recycling

Recycling goes into the yellow lid bins. This includes paper and cardboard, aluminium and tin, and only plastic items numbered 1, 2 and 5 (due to limited onshore recycling facilities in NZ).

Items that are commonly mistaken as recyclable are foil chip packets, polystyrene, tetrapak (long-life milk packaging), plastic bags and gladwrap. Please put these in the household rubbish.



## Glass recycling

Glass recycling is sorted by colour.

Please remember to remove bottle caps and jar lids before recycling your glass items.

## Items for landfill

If you visit during manned hours (Thursday and Sunday, 1 - 4:30pm), you can dispose of green waste or rubbish for the Rotorua Landfill Refuse Transfer Station.

Fees changed in July 2021, after changes to the national waste disposal levy and Emission Trading Scheme by Central Government. You can find out more about this on Council's website.



Help us keep your local transfer station tidy by reporting illegal dumping, on ✉ [info@rotorualc.nz](mailto:info@rotorualc.nz) or ☎ 07 348 4199

**ROTORUA**  
**LAKES COUNCIL**  
Te Kaunihera o ngā Roto o Rotorua



## Tarawera Landcare 2115: Pete Fahey

Autumn is upon us after a long hot summer. The trout have started running for their annual spawning cycle.

### Kariri Point

The efforts of the last few years have really paid dividends. The plants we've put in have in the main taken off. The track is being very well used by locals and visitors alike. On the flip side of that is that the nasties such as old man's beard continue to make their presence felt. The work of the monthly working bees will never be finished but those who have been involved to date can pat themselves on the back for the results that are there for all to see.

### Otumutu Lagoon

It is gratifying to see the work that has recently begun by a group of enthusiastic locals by opening up a walking track that skirts Solitaire Lodge. This group has also started attacking the jungle at Otumutu Lagoon. The working bee on the weekend just gone was attended by eighteen volunteers. There's a ton of work to be done here and just like Kariri Point, it will require ongoing maintenance by locals and holidaymakers alike. I mentioned the spawning runs just getting under way. The stream recently unclogged allows people using the track to spot the odd trout making its way upstream to make little trout.

**Below left: Mark Duncan and Ratmeister clearing along the overgrown stream at Otumutu Lagoon at the Landcare working bee, February 2022.**

**Below right: Trout navigating the stream just a few days later**



Celebration - since the last Phantom we made an executive decision to host a Landcare Appreciation event in the form of a good old knees up. Of particular interest was when we were compiling the guest list the number of people who have been involved directly or indirectly in the cause. The 'do' in question was an outstanding success. You know when it's successful because



(Continued from page 27)

*Remember the Stihl Shop in Rotorua give anyone associated with Tarawera Landcare 2115 a discount by way of a donation - so be sure to get your toys serviced there.*



people won't go home. We will be doing it again so hopefully those who couldn't attend this one can make the next one.

### What's next?

There are a couple of exciting projects in the wings. One particular has been stymied by COVID so maybe I can tell you more in the next Phantom.

If you're reading this and haven't attended one of the working bees at either end of the road then please do so, they're a lot of fun.



**Before and after shots from Otumutu Lagoon  
— incredible what a dozen or so motivated people can  
achieve in a couple of morning's work!**



## Tarawera 87.5 FM: Owen Dawe

### 'Spencer Road-The Early Years.'

I am compiling a video record of '**Spencer Road-The Early Years,**' with the help of Jenny Donne.

We would like to meet with and chat over with 'old timers' sharing their memories of the Tarawera they came to cherish. It would take the format of an informal chat between Jenny and you recalling the early days, experiences and what you love about Tarawera. If you have any photos, 8mm movie film, video or coloured slides of Tarawera, I'd like to incorporate these as well into the programme.

Jenny and I are really looking forward to meeting you and spending time walking down memory lane with you. I hope you can join us.

Owen Dawe 3628297 or email [tarawerafm@gmail.com](mailto:tarawerafm@gmail.com)

### Tarawera 87.5 FM

Grateful thanks to listeners and those who have donated money to the running and expansion of Tarawera FM. It's most encouraging. The terrain at Tarawera certainly does not favour FM broadcasting. Plus regulations limit broadcasting to a miserable one watt, make it difficult, I'm broadcasting from home at Otumutu Lagoon. Yet on a car radio a decent signal can be received just beyond TeTora Road. With a FM radio and an antenna you should be able to receive Tarawera FM inside that area. The aerial can range between a simple piece of wire to rabbits ears.

Program is aimed at a older audience with a selection of pop music from the 50's to 90's inclusive. 6am we play the Billboard Top 500 songs. 9am rewinding the 50's. 10am rewinding the 60's, then at 11am we rewind the 70's. From noon till 4pm its the Tarawera Jukebox, a mix of 60,70, 80, and 90 music. 4pm 'Anything Goes'. 8pm overnight it's Old Time Swing and Jazz.

The program may vary a bit as I may incorporate breakouts of Latin, Country, Big Band and Motown.

On Friday nights now from 6pm to 9pm it's 'Friday Jam and Jazz Session'.

If you have any suggestions or feed back please let me know.

I can also come to your place to help you with any reception difficulties.

Thank you, Owen.

Ph. 3628297 or email [tarawerafm@gmail.com](mailto:tarawerafm@gmail.com)





## DOC Update: Caraline Abbott

### Citizen Science at its Best

Okareka Local Steve Goodin has revealed some interesting behaviour in Long-tailed bats (*Chalinolobus tuberculatus*) or pekapeka as part of his citizen science work with Landcare Okareka.



'Batman' Steve, has committed part of his time to monitor the bats in the Lake Okareka Catchment using four bat monitors which Landcare had access to.

"As a bat flies in the dark, it constantly emits a series of echo-location pings to "see" where it is going. The monitor records the pings as a pictogram" explains Steve. "I began placing the monitors for two-week periods around the catchment. I tried forest margins along the Okareka and Tikitapu Scenic Reserves and farm ponds but achieved little success. Then during February 2020, I found bats in the Millar Road Wetland. It seemed the bats visited this wind-protected area to forage.

The following year I found bats in a native forest setting at a site we named Roera1, then shortly after at nearby Roera2. Strangely though, monitoring only 200 metres away from Roera2 recorded very few bats. The only difference between the two sites was the presence of old Pukatea trees at Roera2. The native forest in the catchment does not have any podocarp trees so the old Pukatea were functioning as bat roosts."

Steve now had three good monitoring sites and started to monitor continuously between October and May. After a bit of trial and error a fourth monitoring site was established in Tikitapu and he discovered the bats roosted in a tree for only one or two nights before moving on. It seemed to Steve that Long-Tailed bats are highly mobile and frequently move roosts, therefore longer monitoring periods were necessary to give any chance of detection.

Steve commented, "In January 2022 the continuous monitoring paid an unexpected dividend when I spotted a cluster of unusual recordings at Roera2 which did not occur at the other sites."

Steve got in touch with the Department of Conservation, and Terrestrial Ecologist Rhys Burns speculated they might be male bats singing to females. While this behaviour was well known in Short-Tailed bats (*Mystacina tuberculata*) it hadn't been observed in Long-Tailed bats.

Next year Landcare will meet DOC at Roera2 and hopefully record the unusual sounds to help gather information on the species and try and understand this unusual behaviour.

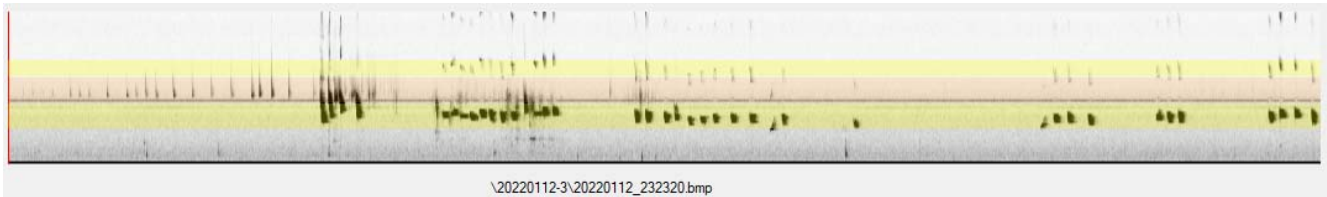
Many thanks to Steve and Landcare Okareka for their commitment to this body of work. Without the help of volunteers like Steve, much work would not get completed within the confines of DOC's limited

(Continued on page 31)

(Continued from page 30)

resources.

**Below: Unusual pictogram produced by bat monitoring. Credit: Steve Goodin, Landcare Okareka**



### Hut tickets available from the Redwoods Centre

While the Rotorua visitor information centre is closed, hut tickets can be purchased from the Redwoods visitor centre. Annual hut passes can be purchased via the DOC website.



### Vaccine pass are not required at DOC facilities from 4<sup>th</sup> April, 2022

From 11.59pm on Monday 4 April, the Department of Conservation is suspending its requirement for people to be fully vaccinated to use DOC accommodation in line with updated public health guidance. This means anyone staying or using DOC huts, campsites and lodges will no longer need a My Vaccine Pass.

### Greenfund

The Greenfund is a New Zealand Motor Caravan Association (NZMCA) initiative that helps fund grassroots environmental and conservation projects throughout New Zealand that offer opportunities for member participation. The Greenfund supports the NZMCA's strategic goals of promoting the sustainable protection of the natural environment, while creating opportunities for member involvement.

If some extra funding and more hands to help out would make a difference to your project, or the project of a community group in your area, then visit [www.nzmca.org.nz/greenfund](http://www.nzmca.org.nz/greenfund) Please feel free to share this information.

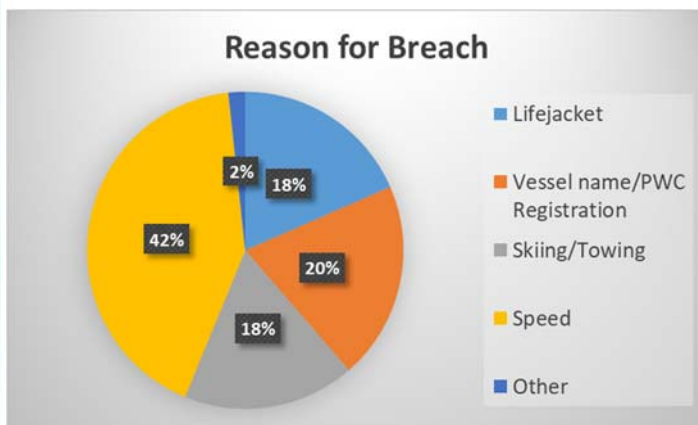


# BOPRC Harbourmaster Update: Roly Bagshaw

Once again the statistics show us that all lakes have been very busy this past summer with our Maritime Patrol vessels engaging with 2,056 craft, and 7,346 people spoken with in the Lakes region (Oct – Mar 2022).

We still have a lot of work to do educating all lake users around the rules and acceptable behaviour on our lakes. This is evident from the 18% increase in calls to our 0800 5knot call line for December and 35% for January, most of this for boatie behaviour matters!

I couldn't have been happier with our Patrol personnel this season - such a diverse crew but all sharing so much aroha for the lakes and collectively, very passionate about keeping lake users safe. With education always front of mind we gave away more than 500 copies of our "Boating in the Bay" publication and unbelievably, 1,500 packets of lollies to those doing the right thing (we reckon kids claimed most of these!)

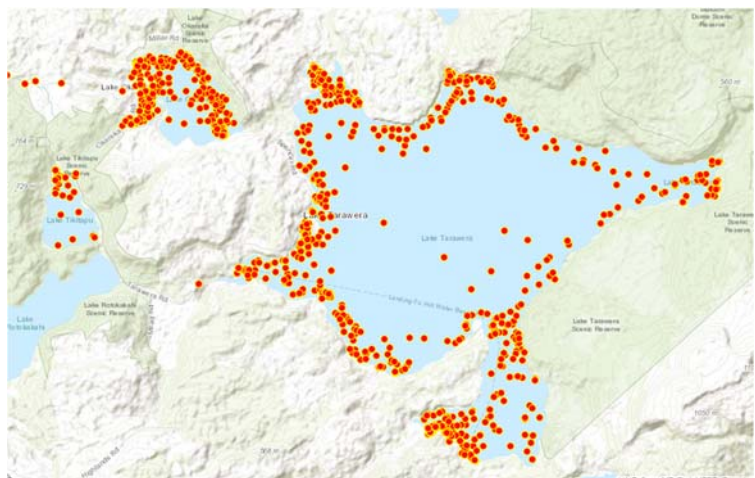


65% of patrol stop interactions were for routine PFD (lifejacket) checks. While issued breaches for those not following the rules were evenly spread between: no lifejackets on board; speeding inside of 5 knot area; needing three people to ski, and vessels with no name and also PWCs (jetskis) with no registration).

While patrols had good coverage throughout our more popular lakes, we couldn't be

everywhere at once! The schematic below illustrates where our Lake Tarawera summer interactions occurred.

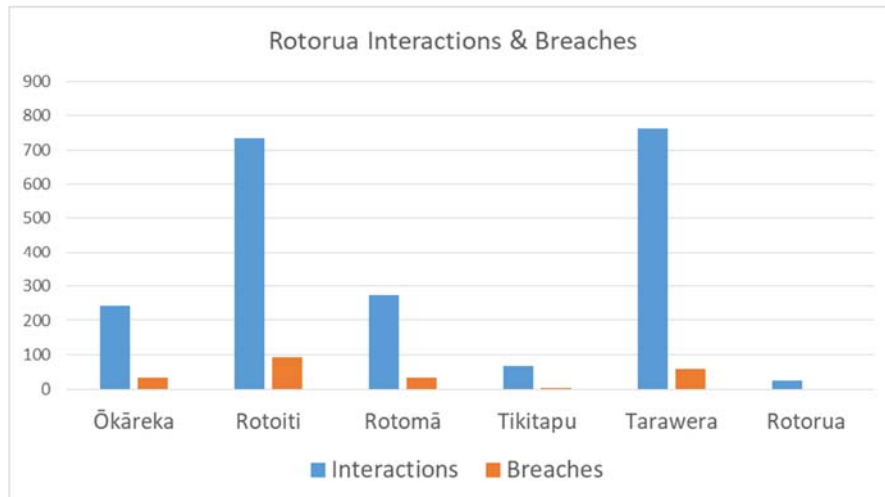
This past summer, 550 lake users have been breached by Maritime Patrols with males making up the vast majority of rule breakers. Interestingly, the age demographic is spread from 20-60+ with males in the 40-49 age group most likely to be infringed. While each interaction is assessed by our Harbourmaster team, a tip is that you will be most likely to receive a \$200 fine for having no lifejackets (PFD's) on board, failing to have three people to ski, or not knowing the 5 knots rules.



(Continued on page 33)



(Continued from page 32)



In February our patrol fleet expanded with the blessing of our latest edition to the team EKE NGARU (Wave Rider). A 5.8m Naiad, this vessel is ideal for interactions and patrolling and perfect for travelling between lakes. OPPORTUNITY! From July our team will be scouting for more crew to train with us and patrol next summer. If this interests you please contact Roly Bagshaw at the Bay of Plenty Regional Council.



Finally, thank you to everyone who was approached by our Patrols this season and thanks for your patience! We are mindful that we are interrupting your day, and we do our best to make the interaction as positive as possible with safety of all lake users our ultimate goal.

Over the coming months expect to see our team maintaining navigation aids and signage around the lakes. Please come and say hello, as we're always interested to hear how we can improve safety on Lake Tarawera and our other lakes.

**Roly Bagshaw**

**Senior Maritime Officer (Lakes)**

## Te Arawa Lakes Trust: Tegan Church

Toitū Te Whenua Land Information New Zealand (LINZ), Toi Moana Bay Of Plenty Regional Council and Te Arawa Lakes Trust would like to inform our communities and residents that Te Arawa Lakes Trust is taking up delivery of the [aquatic weed management programme](#) for the Te Arawa/Rotorua Lakes from 2022.

Te Arawa Lakes Trust's Biosecurity Manager William Anaru says, "This is a great opportunity for Te Arawa Lakes Trust and builds on many years of the Trust's involvement in the weed management programme alongside LINZ and Toi Moana.

"We'll be working closely with all our lakeside communities as we get the programme underway for 2022 and will ensure people know where to get the relevant information and make enquiries regarding weed control operations on our lakes."

Spraying is carried out twice a year utilising experienced contractors and Te Arawa Lakes Trust are preparing for the first round in April and May, subject to weather.

"It is about restoring the mauri of our lakes and with our ongoing mahi we hope to see a decline in the presence of lake weed across the region, and a long term reduction in the need for large-scale control."

Toitū Te Whenua Manager of Biosecurity and Biodiversity Tracey Burton says it's exciting to see delivery of this specialist work being undertaken at a local level.

"Ensuring our lakes are as healthy and weed free as possible is vital for communities to continue to enjoy and use the lakes. Having the Te Arawa Lakes Trust and their community on board to deliver this work is a win-win for everyone." said Ms Burton.

Bay of Plenty Regional Council Biosecurity Team Leader for Marine and Freshwater Hamish Lass commented that the move helps to achieve the goals set out in the 2020 – 2030 Bay of Plenty Regional Pest Management Plan.

"The Te Arawa Lakes Trust already plays a key role in ensuring compliance of the self-certification rules at boat ramps to avoid the spread of aquatic pests to new waterways. Taking responsibility to control and prevent further spread of lake weed already present in a lake is therefore the logical next step."

Notification of the days and locations of the work being undertaken will be available on the LINZ website or phone [022 028 3969](tel:0220283969)

For any enquires about the aquatic weed management programme please forward them to [aquaticweed@tearawa.iwi.nz](mailto:aquaticweed@tearawa.iwi.nz)

For enquiries to Toitū Te Whenua Land Information New Zealand (LINZ) please email [media@linz.govt.nz](mailto:media@linz.govt.nz)

## LTRA: Current Committee

**Chair:** Libby Fletcher      [libby@ultimatenz.com](mailto:libby@ultimatenz.com)

**Secretary:** Martin Wiseman   [martin.wiseman@dlapiper.com](mailto:martin.wiseman@dlapiper.com)

**Treasurer:** Richard Noke      [noke@eol.co.nz](mailto:noke@eol.co.nz)

### Committee:

**Terry Beckett:**   [becketts.tb@gmail.com](mailto:becketts.tb@gmail.com)

**Ray Gatland:**      [gatland@xtra.co.nz](mailto:gatland@xtra.co.nz)

**Peter Fahey:**     [taraweralandcare@gmail.com](mailto:taraweralandcare@gmail.com)

**Jane Spear:**       [janespear2011@gmail.com](mailto:janespear2011@gmail.com)

**Karen Walmsley:** [taraweratrail@inspire.net.nz](mailto:taraweratrail@inspire.net.nz)

**Fiona McAllister:** [fiona@betterwords.co.nz](mailto:fiona@betterwords.co.nz)

### Rotorua Lakes Community Board Contact:

**Chairman:** Phill Thomass   [phill.thomass@rotorualc.nz](mailto:phill.thomass@rotorualc.nz)

**Lake Tarawera website:**    [www.laketarawera.org.nz](http://www.laketarawera.org.nz)

**Phantom Editor:** Fiona McAllister   Email: [fiona@betterwords.co.nz](mailto:fiona@betterwords.co.nz)

## Useful Numbers



**Emergencies:** Police/Fire/Ambulance/Coastguard 111

**Tarawera Fire Unit:** Chief Fire Officer Steve Gatenby 0274 664 161 [steve.gatenby@til.co.nz](mailto:steve.gatenby@til.co.nz)

Station Officer Murray Dillner 021 290 0376 [murrayedillner@gmail.com](mailto:murrayedillner@gmail.com)

**Rotorua Hospital:** 07 348 1199

**Lakes Primecare Accident/Urgent Medical:** (1165 Tutanekai Street, Rotorua), 07 348 1000

**Poisons Urgent Info:** 0800 764 766/Non Urgent 03 474 7000

**Rural Delivery** -Jan & Glen Harmer: 07 349 1254/022 153 6894

**Security** – George Gilmour 07 362 8378 [gilmour06@gmail.com](mailto:gilmour06@gmail.com)

**Rotorua Lakes Council:** 07 348 4199

**Bay of Plenty Regional Council:** 0800 884 880 **AED DEFIBRILLATORS:**

**Department of Conservation:** 07 349 7400

**Fish & Game Eastern Region:** 07 357 5501

**Vet Services** – Barrowman & Goodman (110 Lake Rd, Koutu, Rotorua, 3010) 07 343 9090

**We currently have two AED Defibrillators on Spencer Road:**

**1/ At Fire Unit– 151 Spencer Road**

**2/ On the front deck of 11 Rangioru Bay Road (last house on right of Rangioru Bay Reserve)**